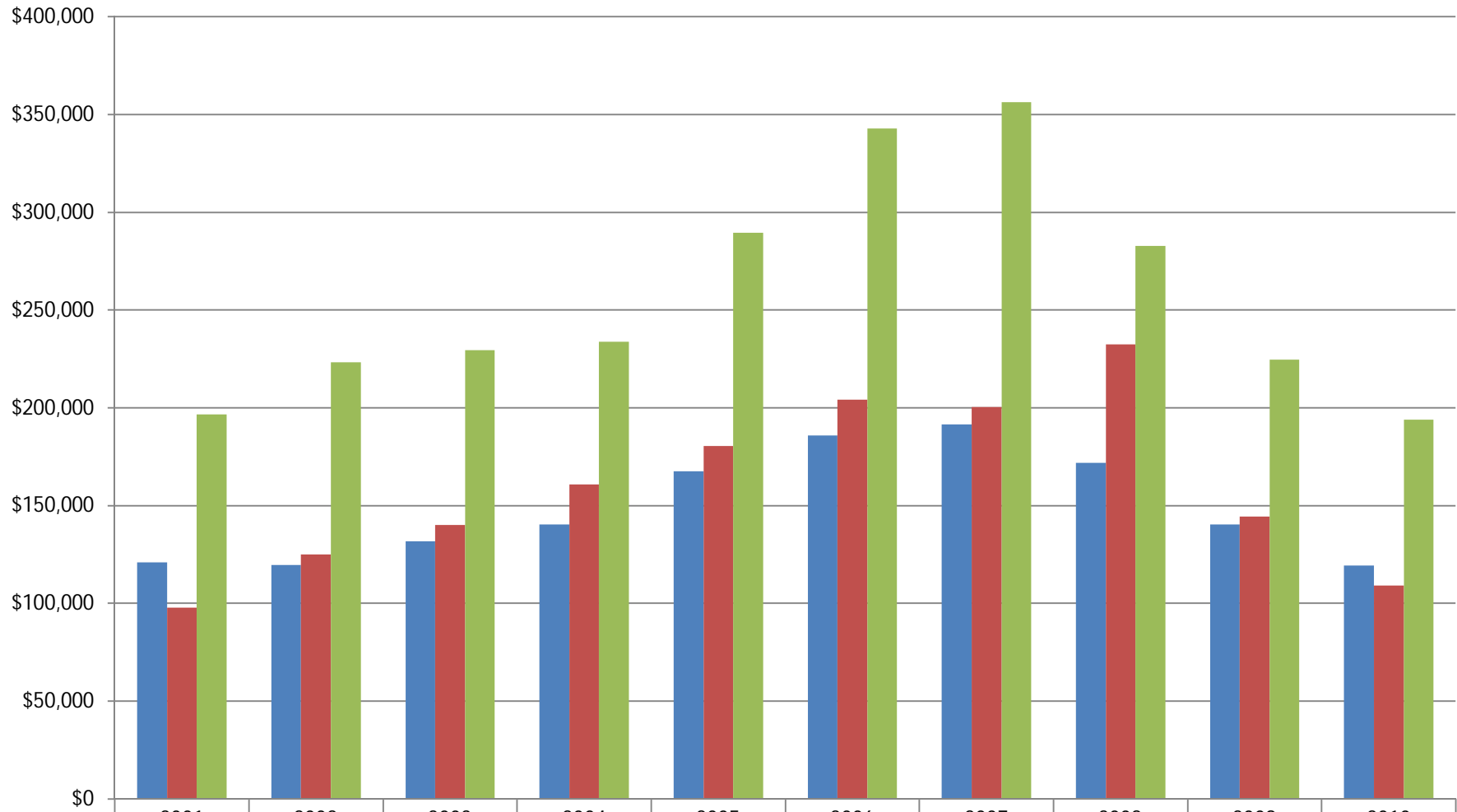


### Average Yearly Sold Price - Mult-Units 5/25/2010

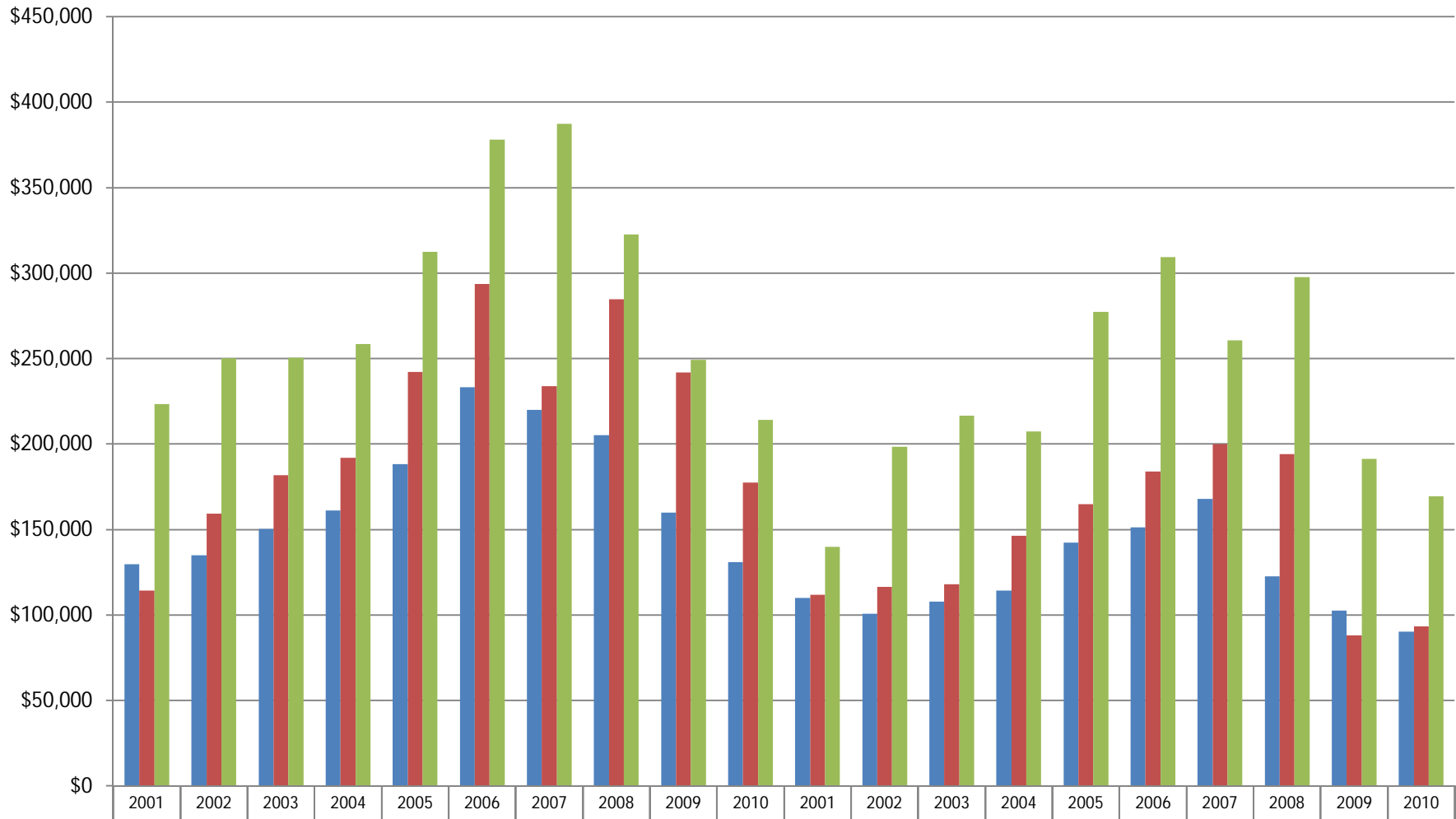
■ Duplex ■ Triplex ■ Fourplex



	2001	2002	2003	2004	2005	2006	2007	2008	2009	2010
Duplex	\$121,027	\$119,703	\$131,702	\$140,305	\$167,640	\$185,839	\$191,477	\$171,798	\$140,217	\$119,372
Triplex	\$97,680	\$125,088	\$140,053	\$160,847	\$180,551	\$204,177	\$200,326	\$232,460	\$144,425	\$109,084
Fourplex	\$196,505	\$223,275	\$229,407	\$233,723	\$289,485	\$342,917	\$356,385	\$282,871	\$224,727	\$193,893

### Average Yearly Sold Price - Mult-Units - Ada & Canyon County 5/25/2010

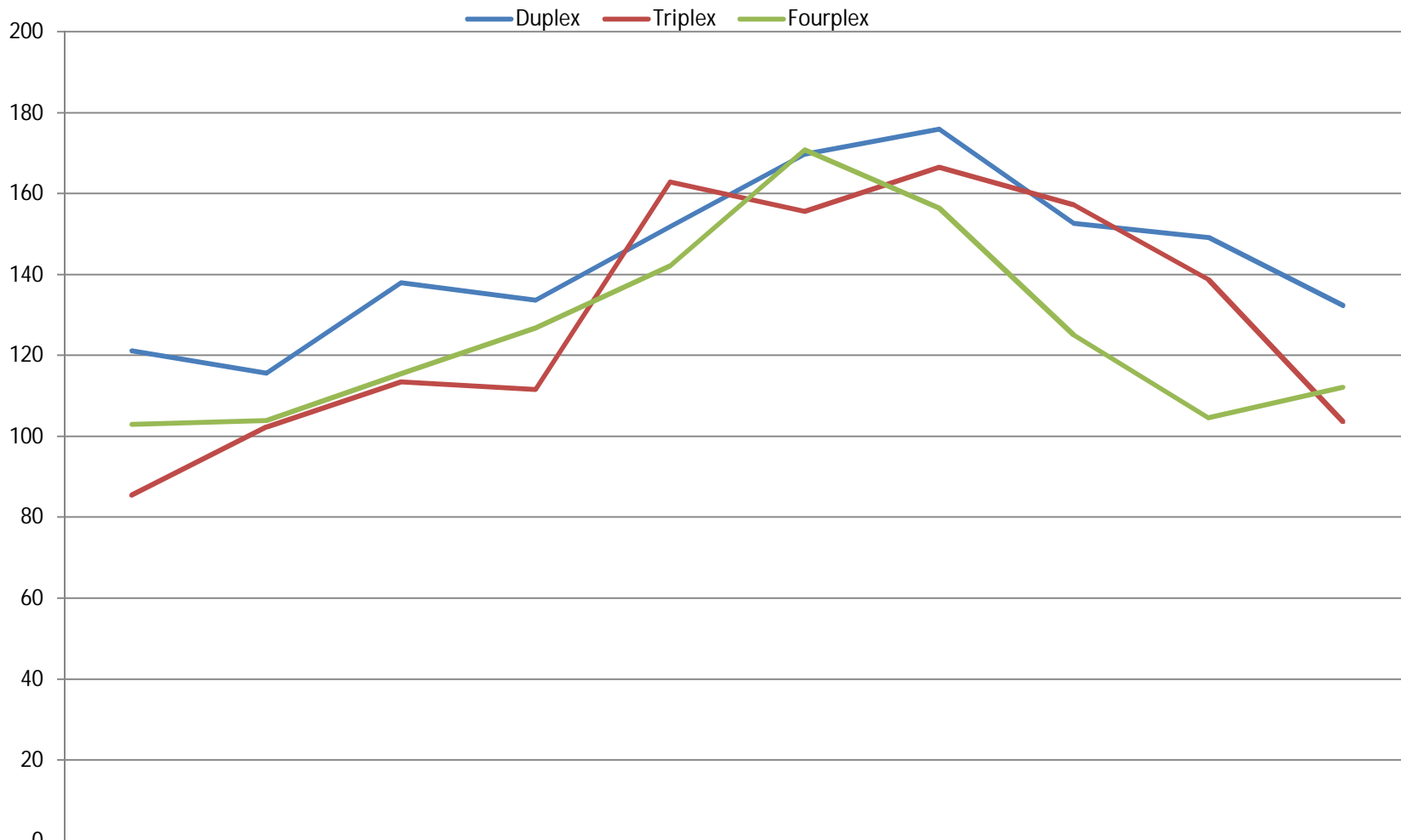
■ Duplex ■ Triplex ■ Fourplex



	2001	2002	2003	2004	2005	2006	2007	2008	2009	2010	2001	2002	2003	2004	2005	2006	2007	2008	2009	2010
Duplex	\$129,61	\$134,90	\$150,41	\$161,12	\$188,33	\$233,20	\$219,87	\$205,03	\$159,95	\$130,91	\$109,87	\$100,69	\$107,63	\$114,29	\$142,20	\$151,13	\$167,78	\$122,47	\$102,56	\$90,300
Triplex	\$114,25	\$159,13	\$181,63	\$191,83	\$242,21	\$293,66	\$233,95	\$284,64	\$242,00	\$177,45	\$111,67	\$116,31	\$117,87	\$146,35	\$164,86	\$183,80	\$199,90	\$194,05	\$88,175	\$93,154
Fourplex	\$223,23	\$250,32	\$250,60	\$258,41	\$312,28	\$378,01	\$387,46	\$322,67	\$249,23	\$214,22	\$139,80	\$198,46	\$216,45	\$207,38	\$277,24	\$309,32	\$260,73	\$297,69	\$191,22	\$169,49

### Average Yearly Gross Rent Multiplier (GRM) - IMLS 5/25/2010

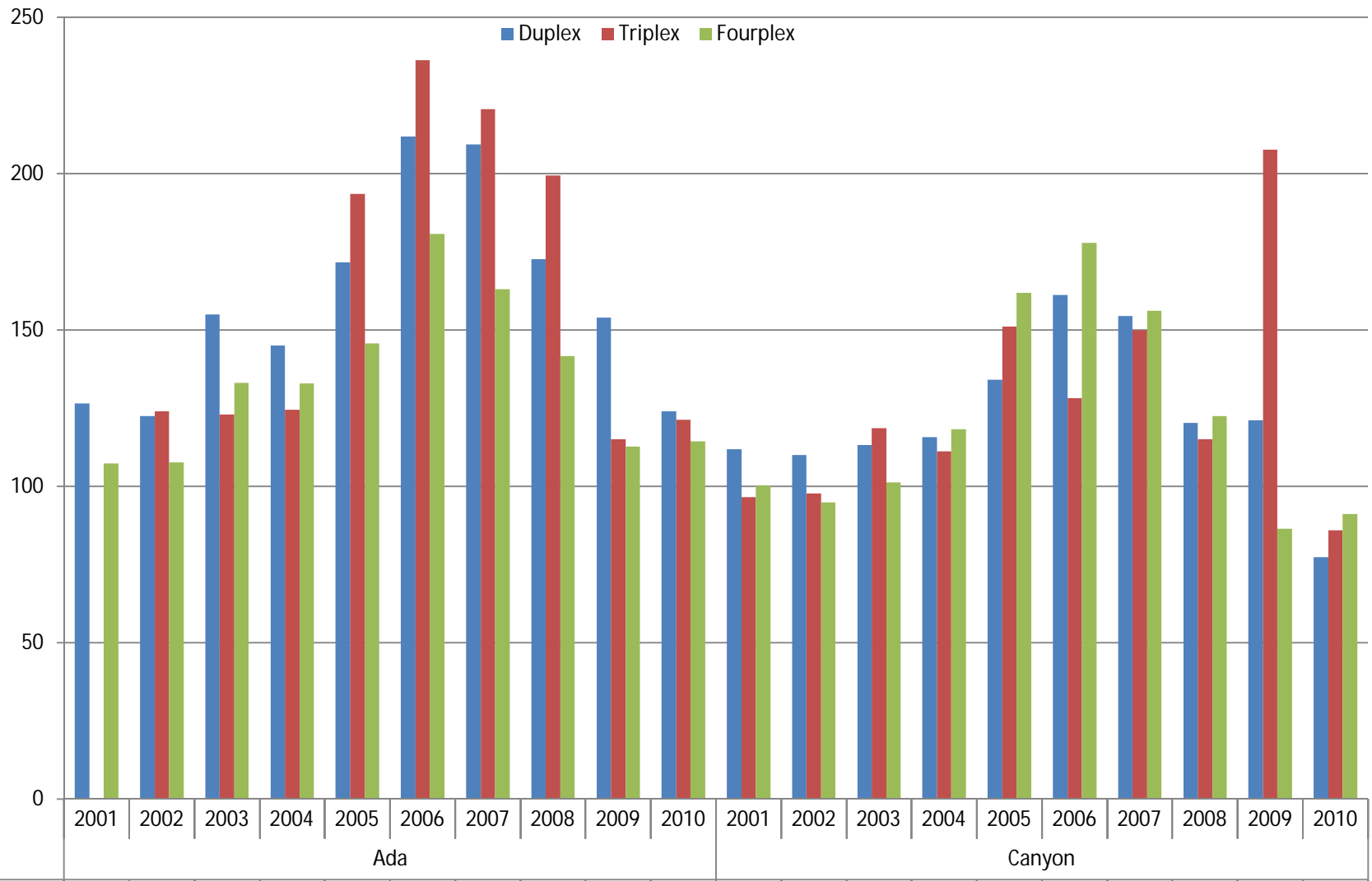
\*GRM = Sold Price / Monthly Rent



	2001	2002	2003	2004	2005	2006	2007	2008	2009	2010
Duplex	121	116	138	134	152	170	176	153	149	132
Triplex	85	102	113	112	163	156	166	157	139	104
Fourplex	103	104	116	127	142	171	156	125	105	112

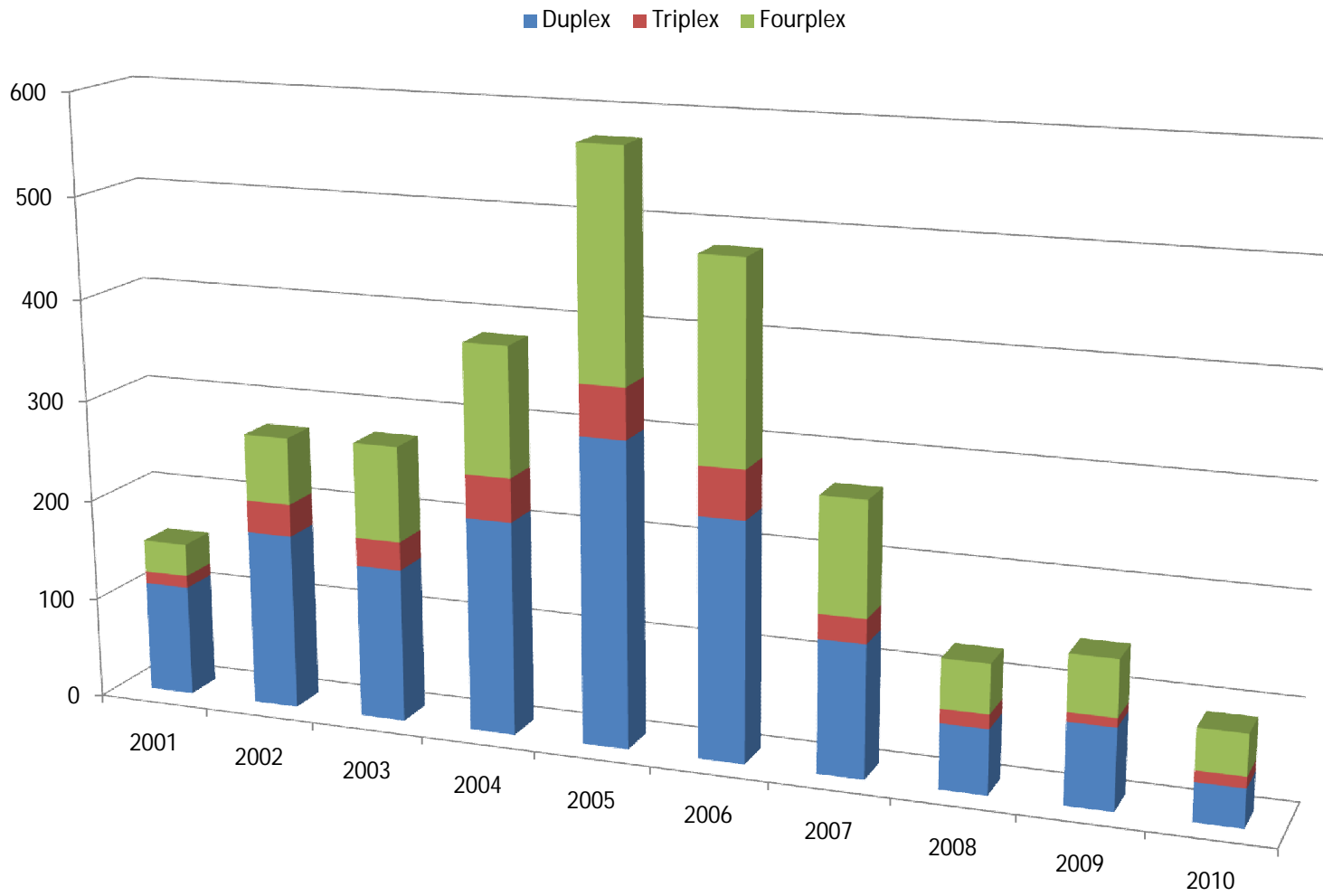
### Average Yearly Gross Rent Multiplier (GRM) - IMLS 5/25/2010

\*GRM = Sold Price / Monthly Rent



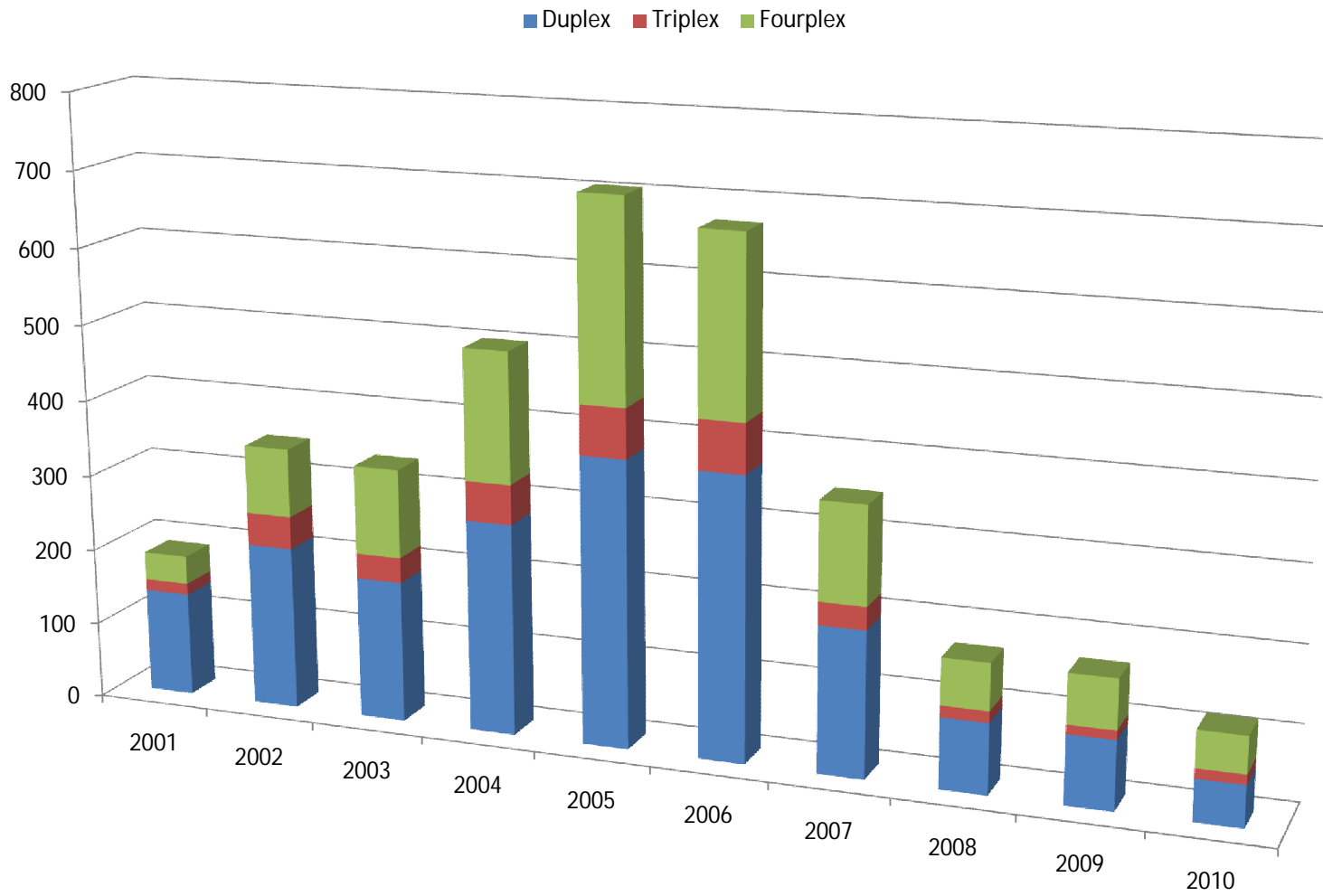
Duplex	126	122	155	145	172	212	209	173	154	124	112	110	113	116	134	161	155	120	121	77
Triplex		124	123	125	194	236	221	199	115	121	97	98	119	111	151	128	150	115	208	86
Fourplex	107	108	133	133	146	181	163	142	113	114	100	95	101	118	162	178	156	122	87	91

### Total Sold - Multi-Units - Ada & Canyon County 5/25/2010



	2001	2002	2003	2004	2005	2006	2007	2008	2009	2010
Fourplex	32	66	94	127	223	196	112	48	55	40
Triplex	12	32	28	43	50	48	24	14	9	11
Duplex	110	174	152	211	301	236	131	64	80	38

### Total Sold - Multi-Units - Entire IMLS 5/25/2010



	2001	2002	2003	2004	2005	2006	2007	2008	2009	2010
Fourplex	37	90	116	171	263	234	128	61	65	48
Triplex	15	43	33	52	65	65	30	15	12	13
Duplex	137	215	186	278	377	372	192	93	91	55