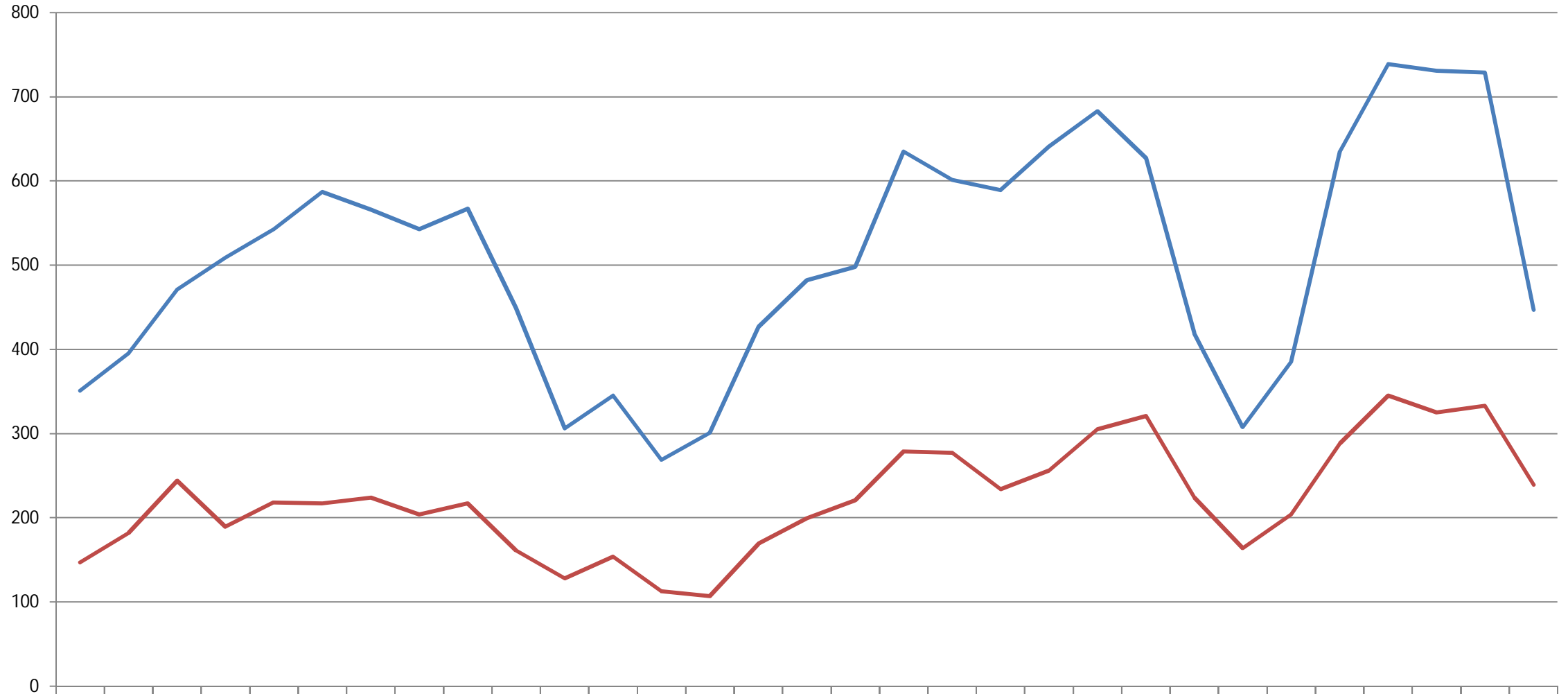


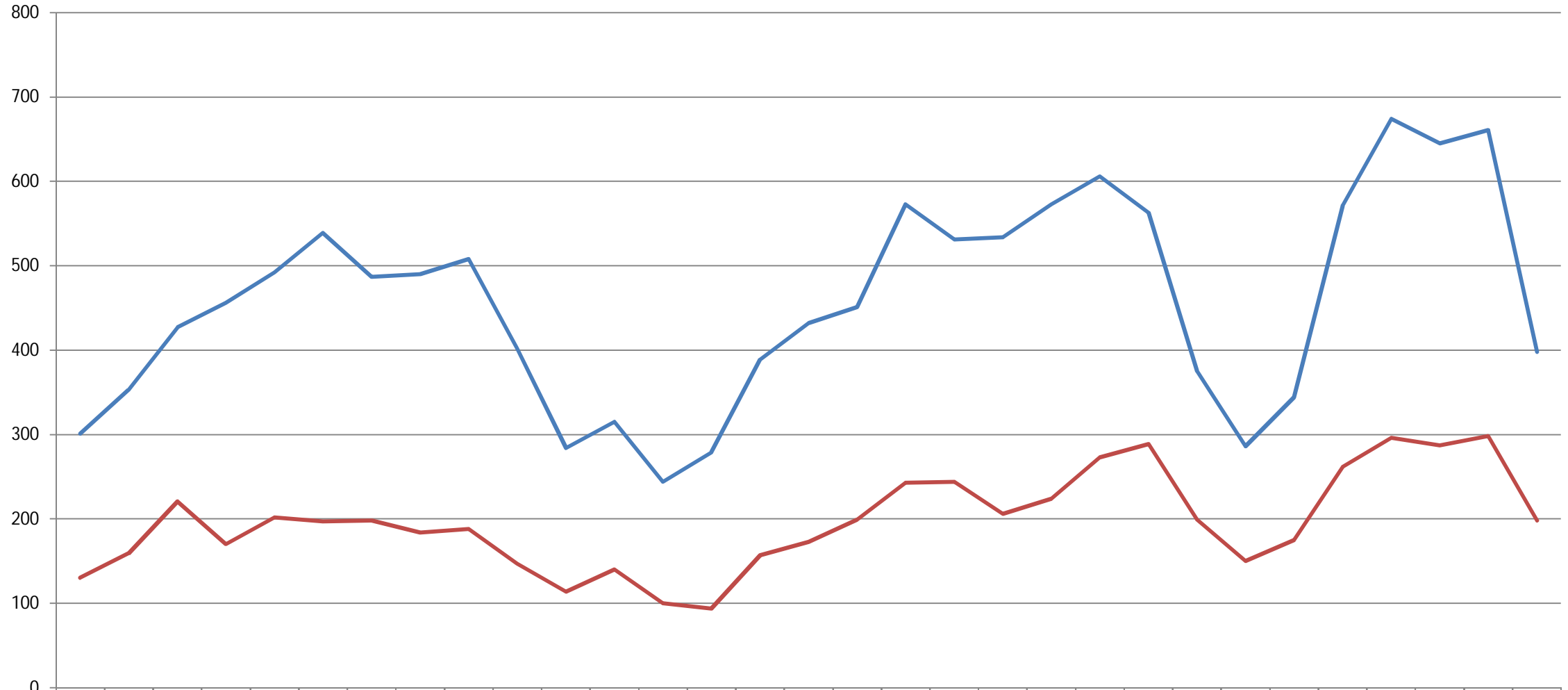
Amout Sold - Ada & Canyon County

Single Family, Single Family w/ Acreage, Townhouse, Condo



	Jan	Feb	Mar	Apr	May	Jun	Jul	Aug	Sep	Oct	Nov	Dec	Jan	Feb	Mar	Apr	May	Jun	Jul	Aug	Sep	Oct	Nov	Dec	Jan	Feb	Mar	Apr	May	Jun	Jul
	2008												2009												2010						
— Ada	351	395	471	509	543	587	566	543	567	449	306	345	269	301	427	482	498	635	601	589	641	683	627	419	308	385	635	739	731	729	447
— Canyon	147	182	244	189	218	217	224	204	217	161	128	154	113	107	169	199	221	279	277	234	256	305	321	224	164	204	288	345	325	333	239

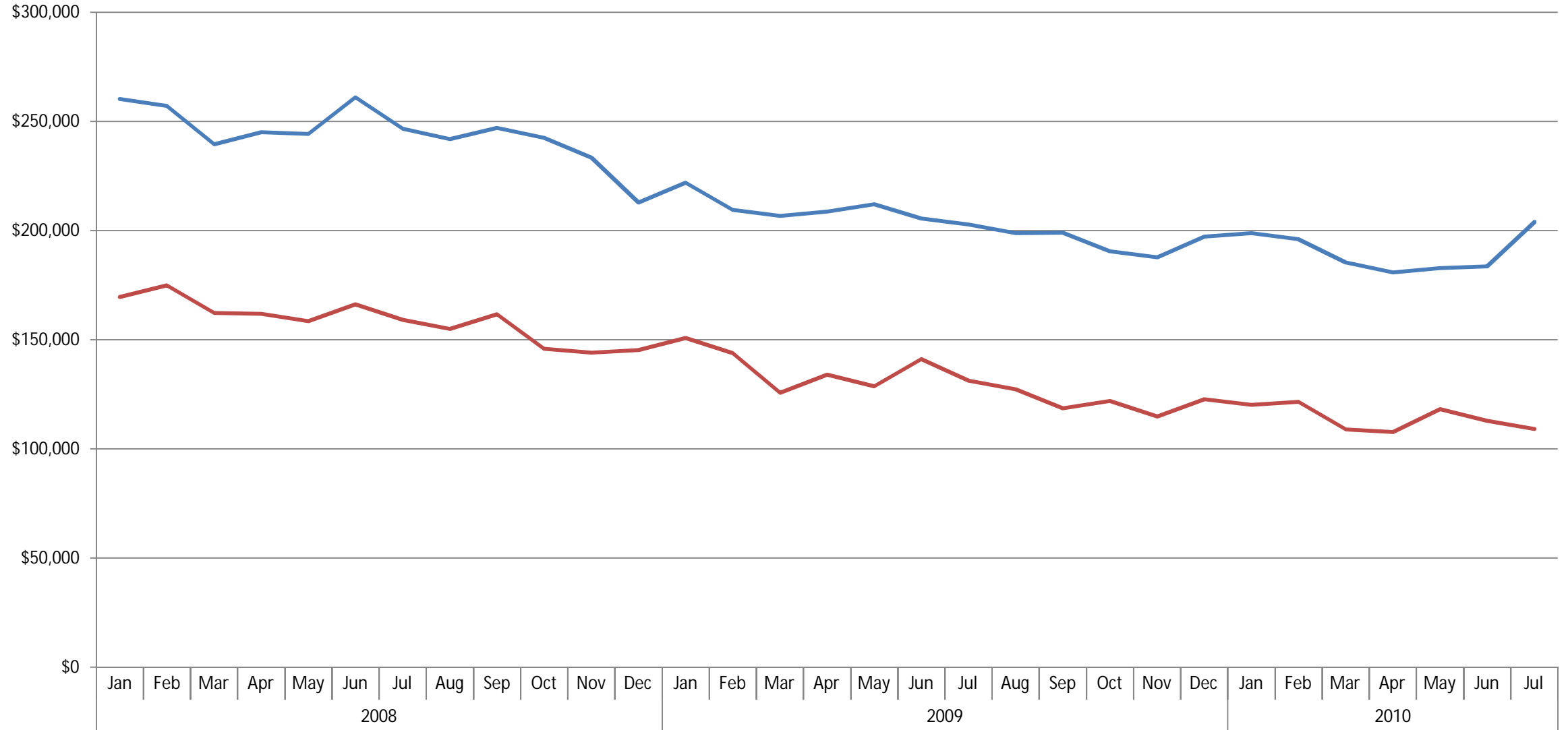
Amout Sold - Ada & Canyon County Single Family Only



	Jan	Feb	Mar	Apr	May	Jun	Jul	Aug	Sep	Oct	Nov	Dec	Jan	Feb	Mar	Apr	May	Jun	Jul	Aug	Sep	Oct	Nov	Dec	Jan	Feb	Mar	Apr	May	Jun	Jul					
	2008												2009												2010											
— Ada	301	353	427	456	492	539	487	490	508	402	284	315	244	279	389	432	451	573	531	534	573	606	563	375	286	344	572	674	645	661	398					
— Canyon	130	159	221	170	202	197	198	184	188	147	114	140	100	94	157	173	199	243	244	206	224	273	289	199	150	175	262	296	287	298	198					

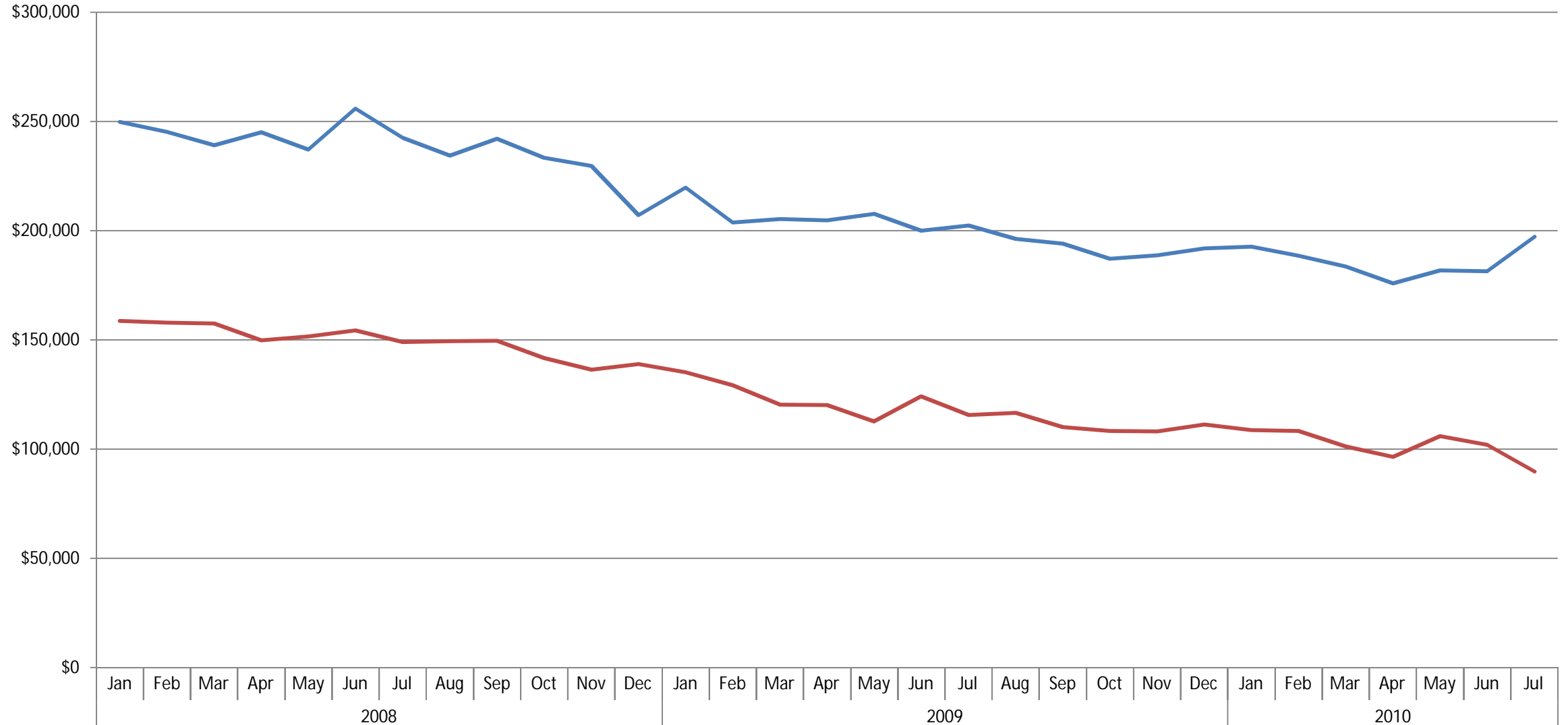
Average Monthly Sold Price - Ada & Canyon County

Single Family, Single Family w/ Acreage, Townhouse, Condo

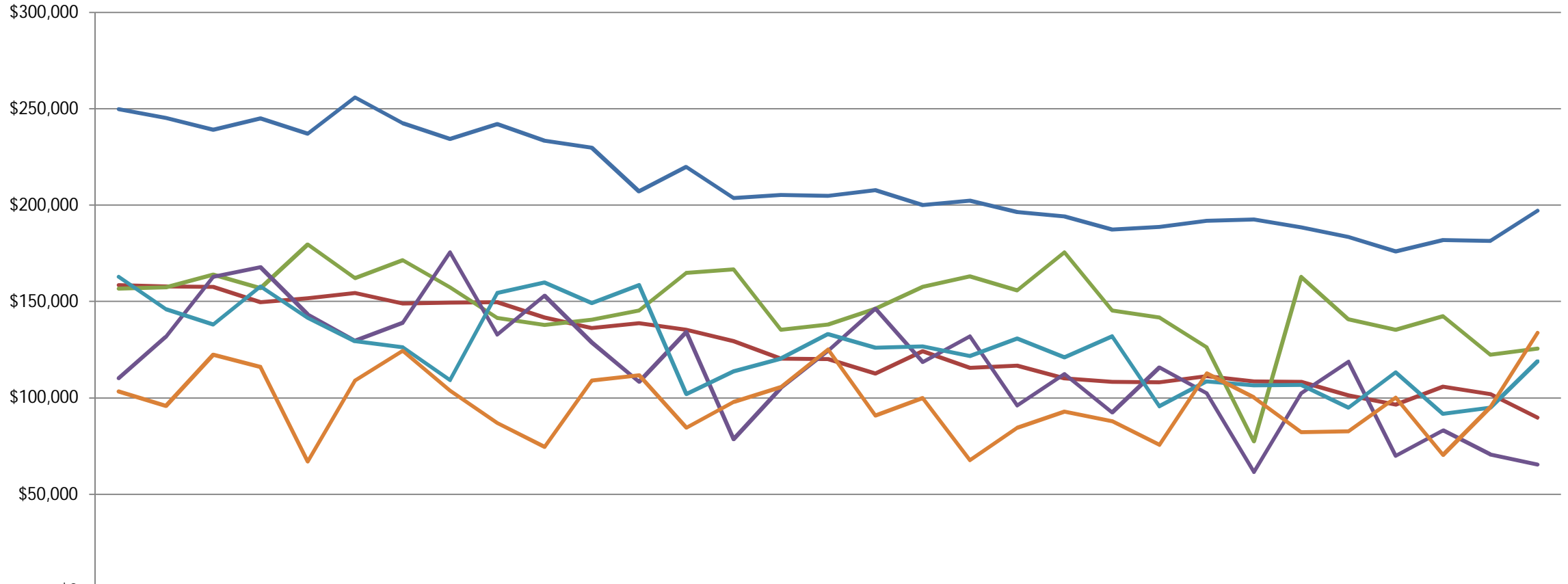


Average Monthly Sold Price - Ada & Canyon County

Single Family Only

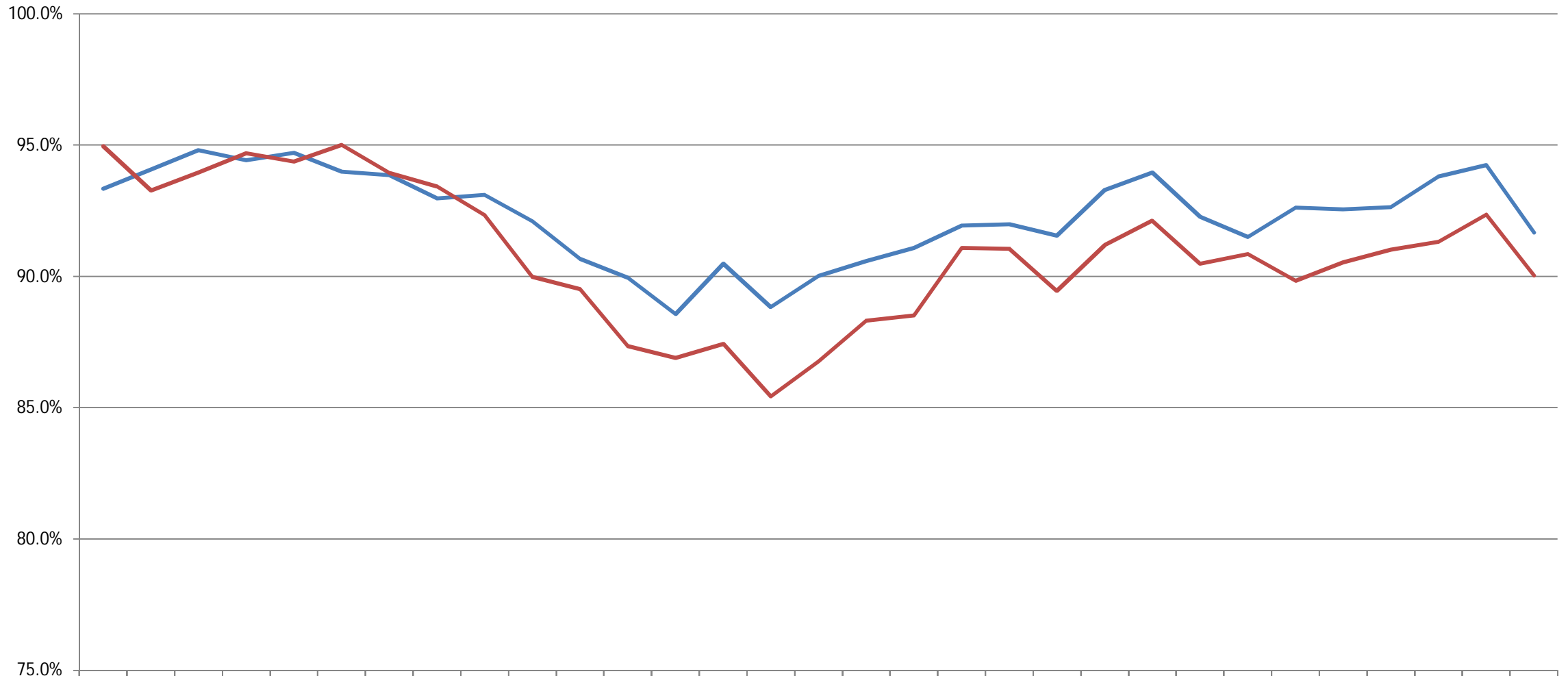


Average Monthly Sold Price Single Family Only



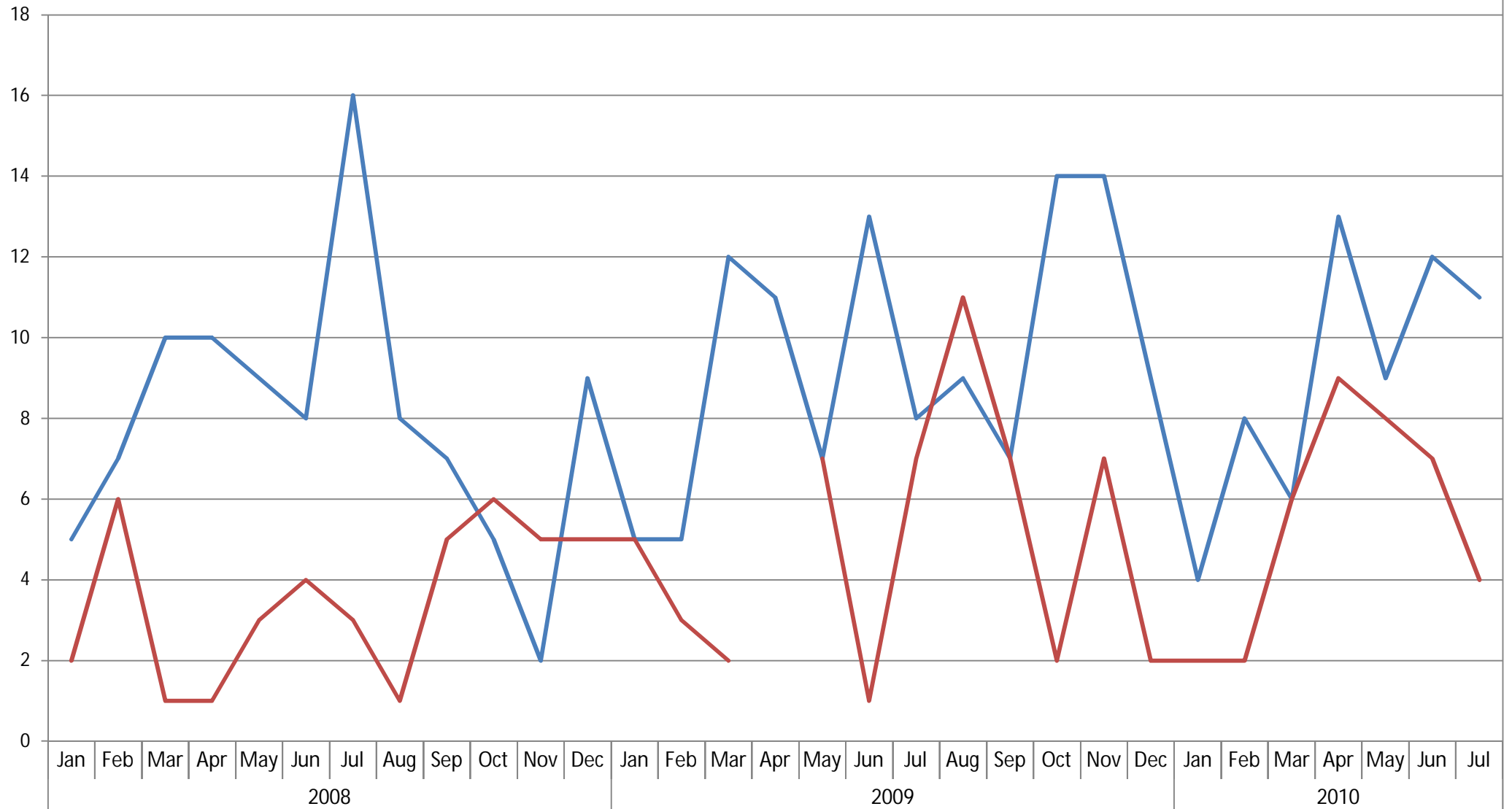
	Jan	Feb	Mar	Apr	May	Jun	Jul	Aug	Sep	Oct	Nov	Dec	Jan	Feb	Mar	Apr	May	Jun	Jul	Aug	Sep	Oct	Nov	Dec	Jan	Feb	Mar	Apr	May	Jun	Jul
	2008												2009												2010						
— Ada	\$249,8	\$245,3	\$239,1	\$245,0	\$237,0	\$255,8	\$242,5	\$234,3	\$242,1	\$233,4	\$229,7	\$207,1	\$219,7	\$203,6	\$205,3	\$204,8	\$207,7	\$199,9	\$202,3	\$196,3	\$194,0	\$187,2	\$188,6	\$191,8	\$192,6	\$188,4	\$183,5	\$175,9	\$181,8	\$181,4	\$197,1
— Canyon	\$158,5	\$157,8	\$157,5	\$149,7	\$151,6	\$154,4	\$149,0	\$149,4	\$149,6	\$141,7	\$136,2	\$138,8	\$135,2	\$129,3	\$120,3	\$120,1	\$112,5	\$124,1	\$115,6	\$116,6	\$110,0	\$108,2	\$108,0	\$111,2	\$108,6	\$108,3	\$101,2	\$96,47	\$105,9	\$101,8	\$89,62
— Elmore	\$156,7	\$157,3	\$163,8	\$156,9	\$179,6	\$162,1	\$171,4	\$157,2	\$141,5	\$137,7	\$140,6	\$145,2	\$164,9	\$166,7	\$135,4	\$138,1	\$146,2	\$157,6	\$163,0	\$155,8	\$175,6	\$145,2	\$141,7	\$126,2	\$77,47	\$162,7	\$140,7	\$135,3	\$142,4	\$122,4	\$125,5
— Gem	\$110,1	\$131,6	\$162,7	\$167,7	\$143,3	\$129,6	\$138,9	\$175,6	\$132,7	\$153,0	\$128,7	\$108,2	\$134,1	\$78,60	\$105,0	\$124,3	\$146,2	\$118,6	\$131,8	\$95,97	\$112,4	\$92,31	\$115,8	\$102,4	\$61,60	\$102,3	\$118,6	\$69,83	\$83,14	\$70,62	\$65,43
— Payette	\$162,8	\$146,0	\$138,0	\$157,9	\$141,4	\$129,3	\$126,3	\$109,3	\$154,3	\$159,8	\$149,2	\$158,3	\$101,9	\$113,7	\$120,4	\$133,0	\$125,9	\$126,6	\$121,6	\$130,7	\$120,9	\$131,9	\$95,48	\$108,6	\$106,5	\$106,6	\$94,94	\$113,3	\$91,81	\$94,97	\$118,9
— Washington	\$103,3	\$95,78	\$122,2	\$116,0	\$67,05	\$109,0	\$124,5	\$103,7	\$87,00	\$74,40	\$108,8	\$111,7	\$84,37	\$97,90	\$105,5	\$125,0	\$90,80	\$100,0	\$67,62	\$84,48	\$92,84	\$87,83	\$75,63	\$112,5	\$100,0	\$82,25	\$82,66	\$100,0	\$70,33	\$95,04	\$133,6

Average Monthly Sales Ratio Single Family Only



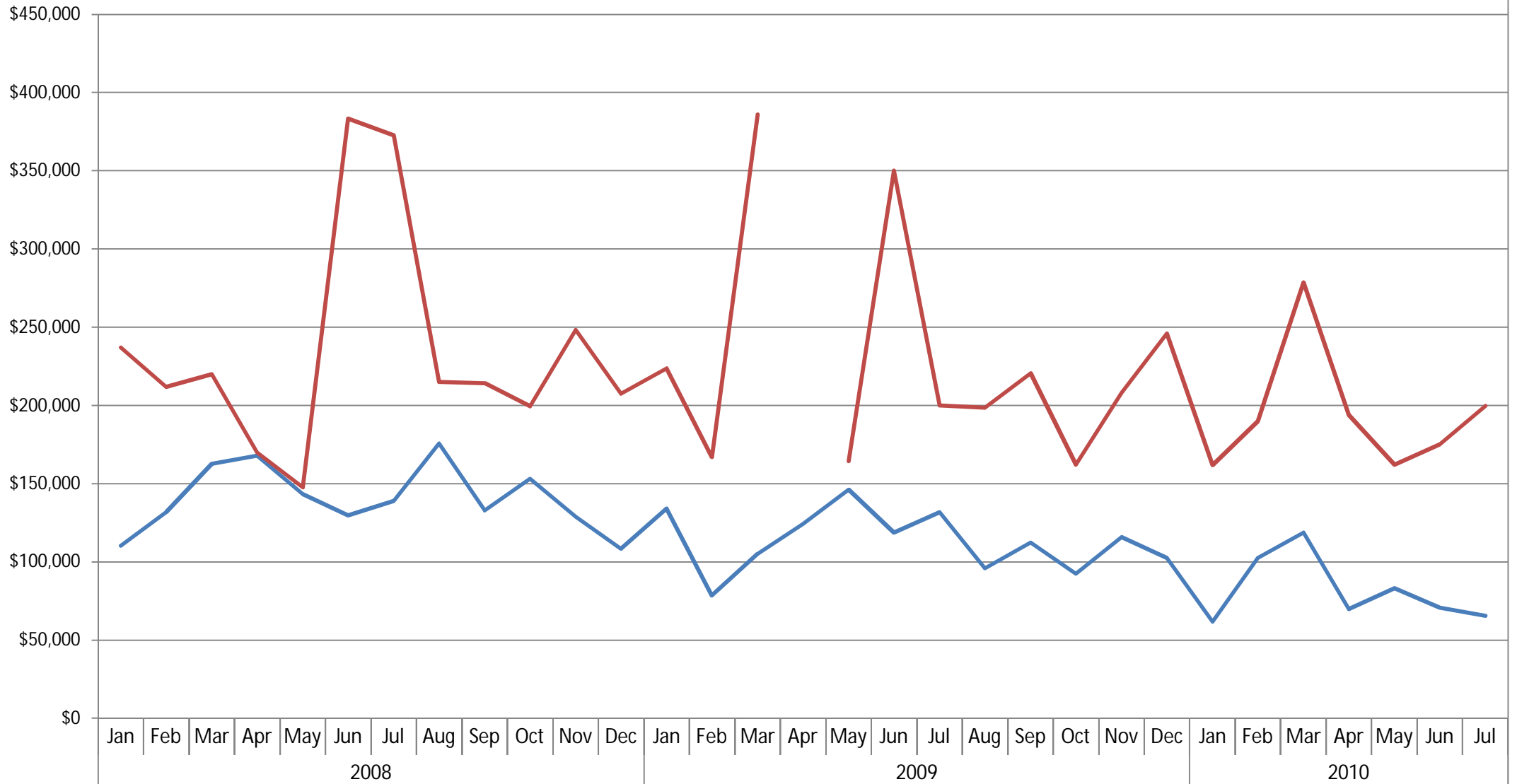
	Jan	Feb	Mar	Apr	May	Jun	Jul	Aug	Sep	Oct	Nov	Dec	Jan	Feb	Mar	Apr	May	Jun	Jul	Aug	Sep	Oct	Nov	Dec	Jan	Feb	Mar	Apr	May	Jun	Jul
	2008												2009												2010						
— Ada	93.3	94.1	94.8	94.4	94.7	94.0	93.9	93.0	93.1	92.1	90.7	89.9	88.6	90.5	88.8	90.0	90.6	91.1	91.9	92.0	91.6	93.3	94.0	92.3	91.5	92.6	92.6	92.6	93.8	94.2	91.7
— Canyon	94.9	93.3	94.0	94.7	94.4	95.0	93.9	93.4	92.3	90.0	89.5	87.3	86.9	87.4	85.4	86.8	88.3	88.5	91.1	91.1	89.4	91.2	92.1	90.5	90.9	89.8	90.5	91.0	91.3	92.4	90.0

Monthly Sales - GEM County



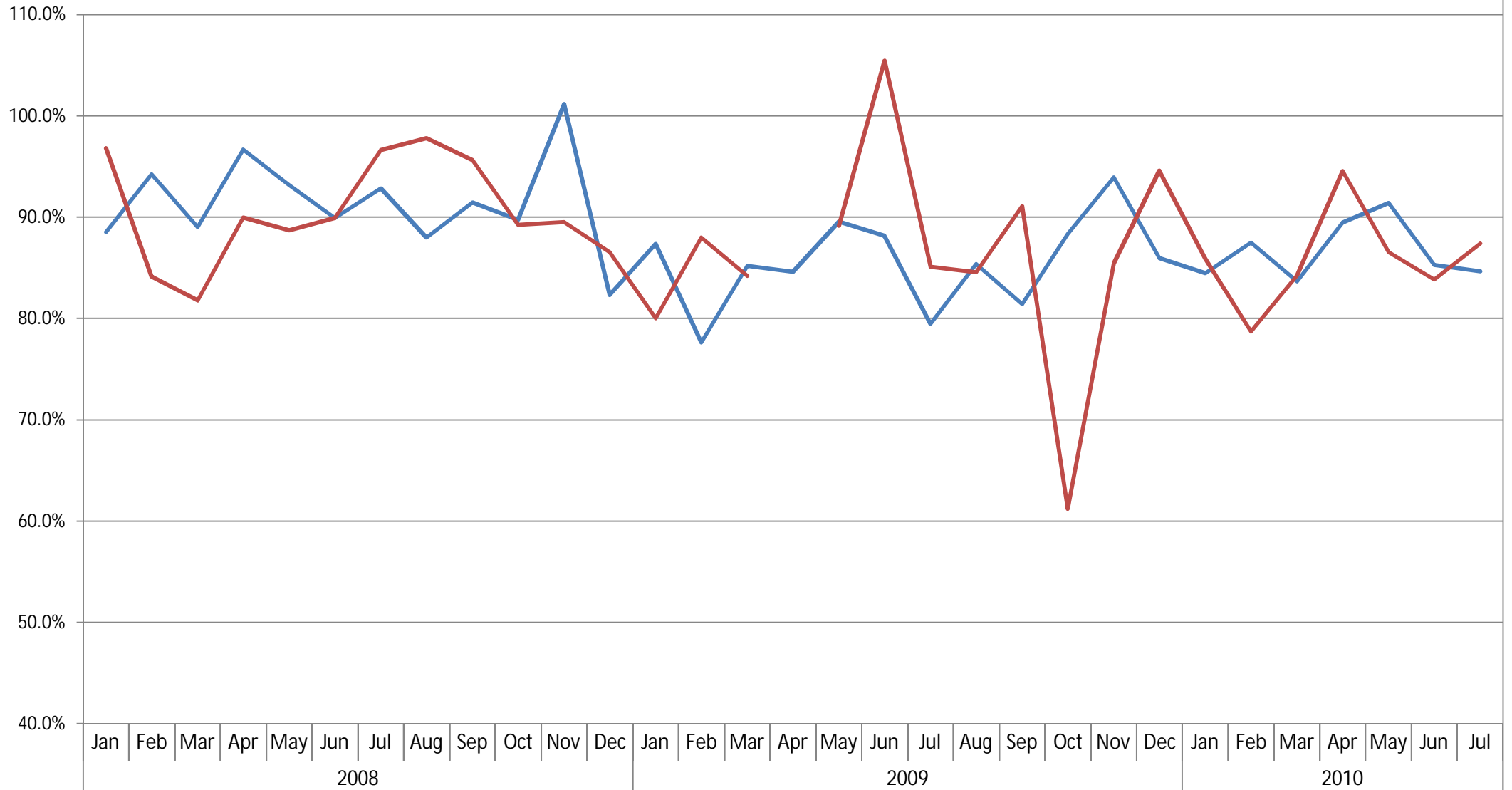
— Single Family	5	7	10	10	9	8	16	8	7	5	2	9	5	5	12	11	7	13	8	9	7	14	14	9	4	8	6	13	9	12	11
— Single Family w/ Acreage	2	6	1	1	3	4	3	1	5	6	5	5	5	3	2		7	1	7	11	7	2	7	2	2	2	6	9	8	7	4

Average Monthly Sold Price - GEM County



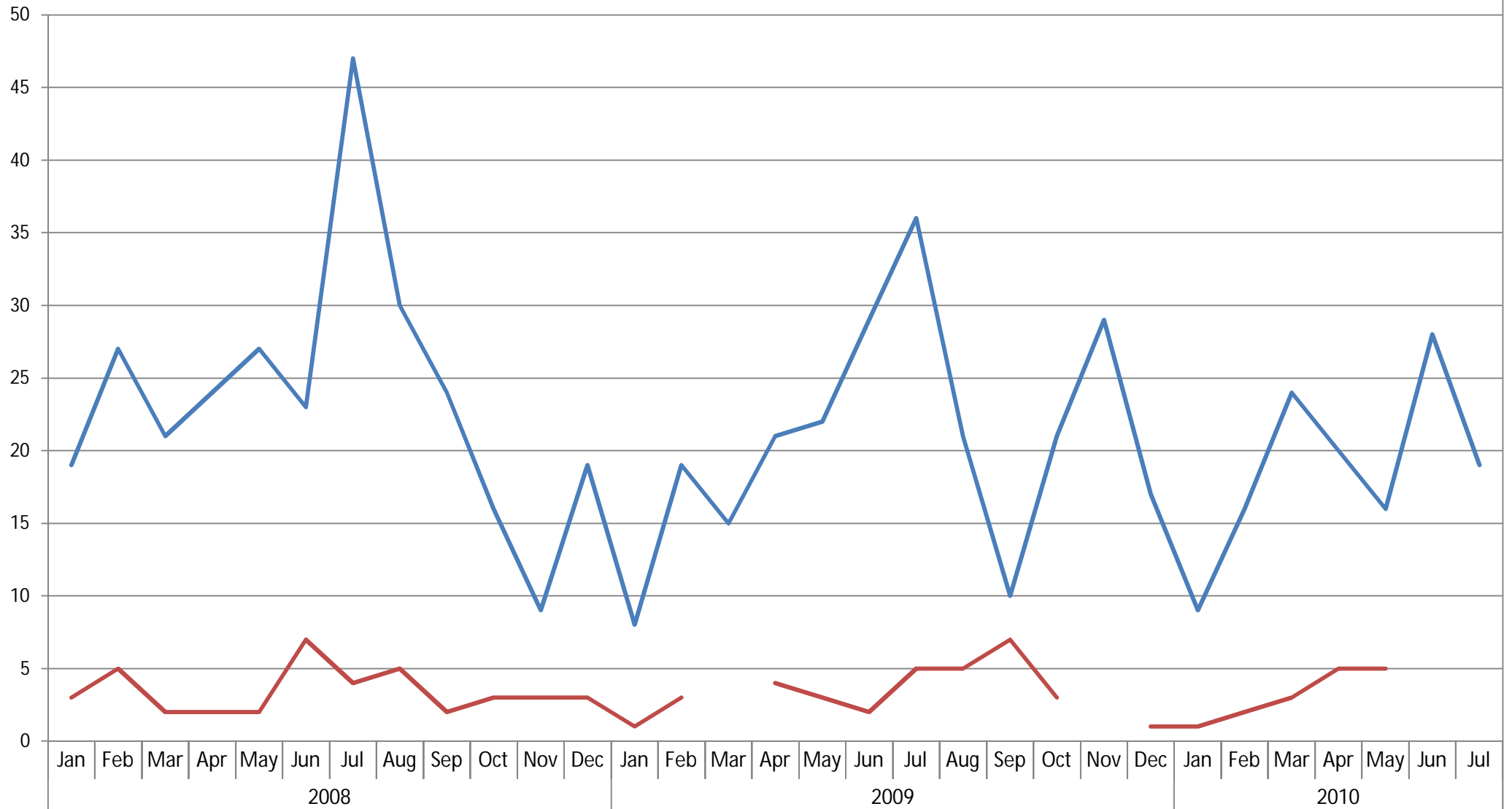
— Single Family	\$110	\$131	\$162	\$167	\$143	\$129	\$138	\$175	\$132	\$153	\$128	\$108	\$134	\$78	\$105	\$124	\$146	\$118	\$131	\$95	\$112	\$92	\$115	\$102	\$61	\$102	\$118	\$69	\$83	\$70	\$65
— Single Family w/ Acreage	\$237	\$211	\$220	\$170	\$147	\$383	\$372	\$215	\$214	\$199	\$248	\$207	\$223	\$167	\$386		\$164	\$350	\$199	\$198	\$220	\$162	\$208	\$246	\$161	\$190	\$278	\$193	\$161	\$175	\$199

Average Monthly Sale Ratio - GEM County



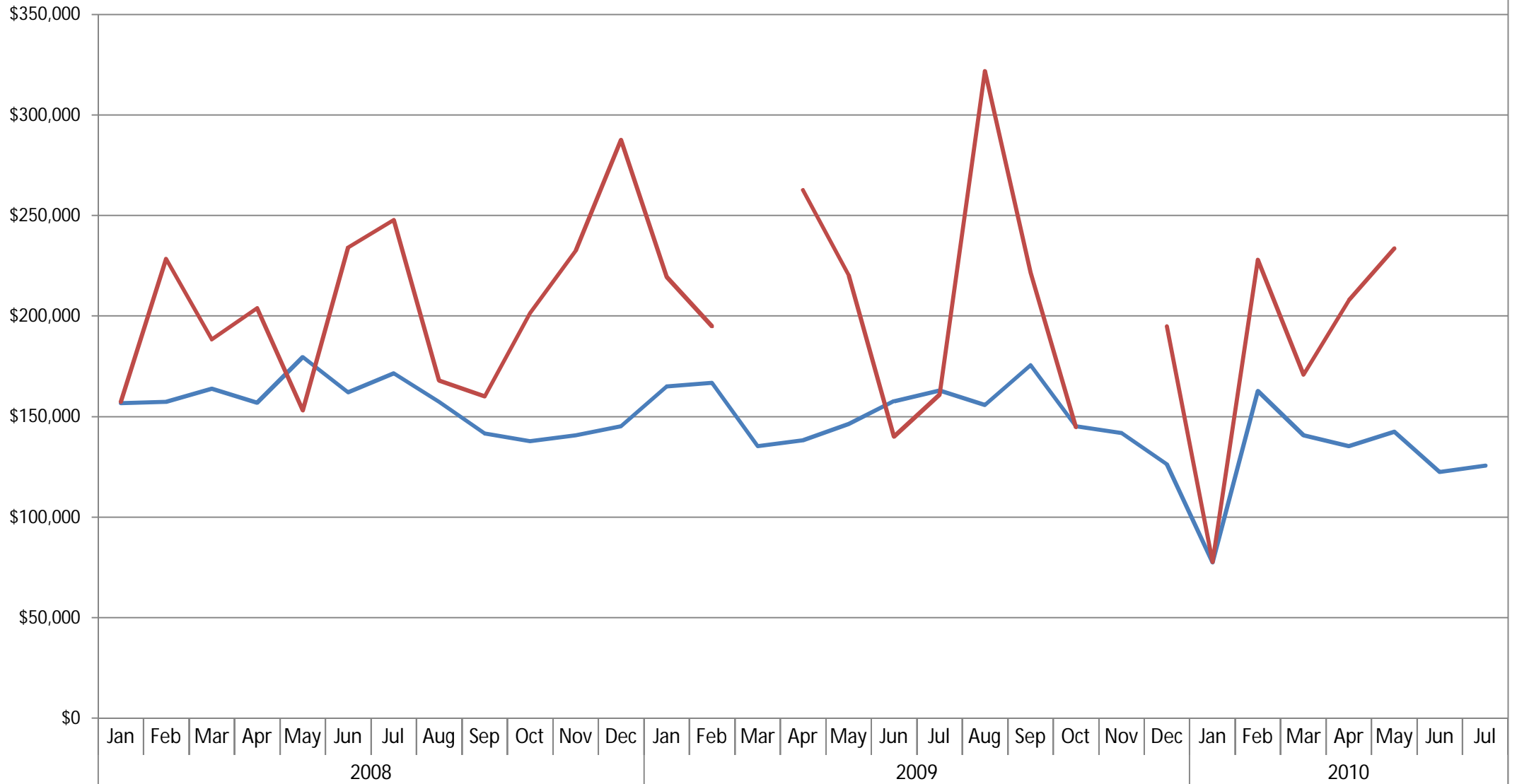
Single Family	88.5	94.2	89.0	96.7	93.1	89.9	92.8	88.0	91.4	89.7	101.1	82.3	87.4	77.6	85.2	84.6	89.6	88.1	79.5	85.4	81.4	88.3	93.9	86.0	84.5	87.5	83.6	89.5	91.4	85.3	84.7
Single Family w/ Acreage	96.8	84.1	81.8	89.9	88.7	89.9	96.6	97.8	95.6	89.2	89.5	86.6	80.0	88.0	84.2		89.2	105.1	85.1	84.6	91.1	61.2	85.4	94.6	85.9	78.7	84.2	94.5	86.5	83.8	87.4

Monthly Sales - Elmore County



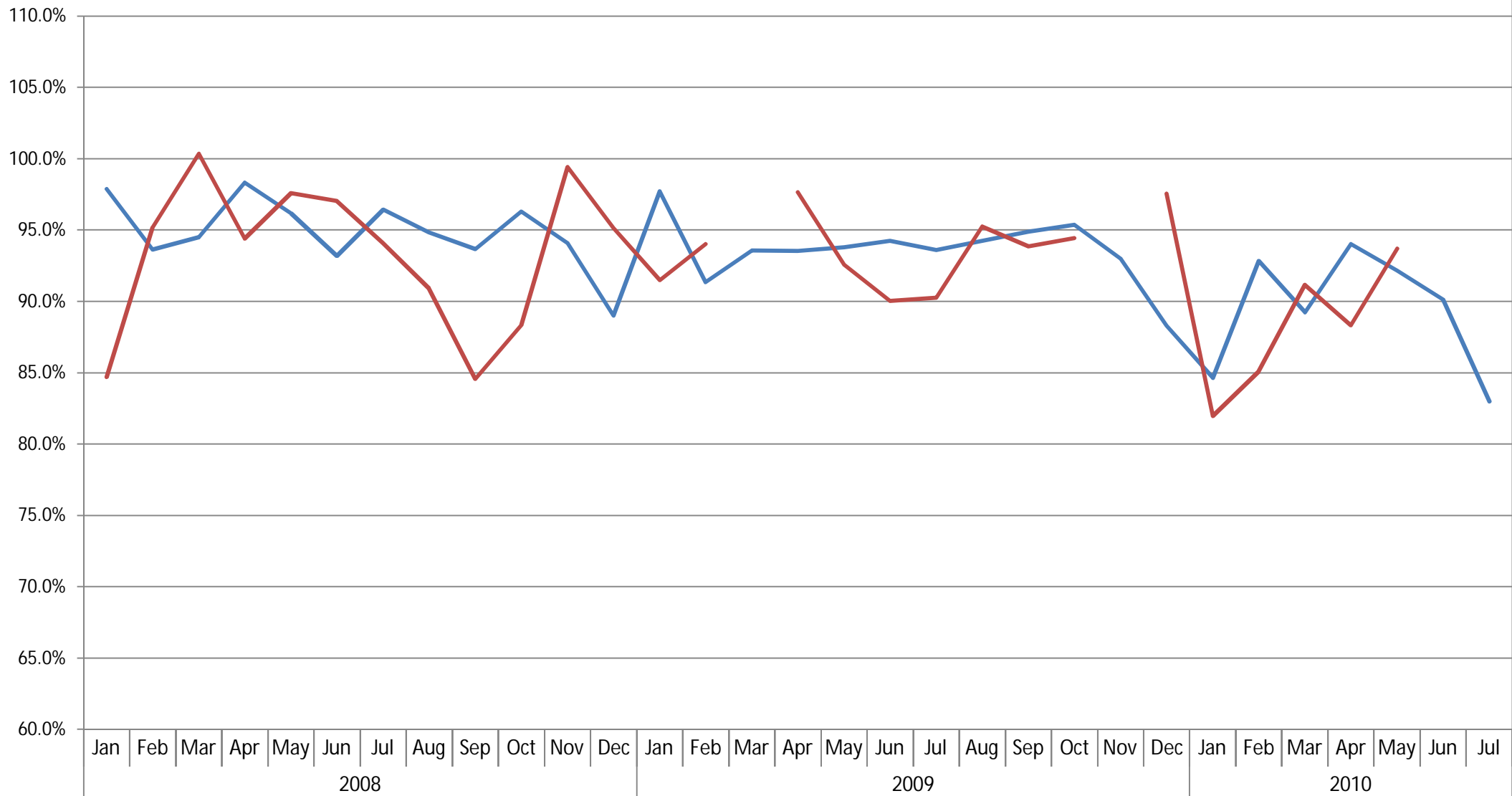
— Single Family	19	27	21	24	27	23	47	30	24	16	9	19	8	19	15	21	22	29	36	21	10	21	29	17	9	16	24	20	16	28	19
— Single Family w/ Acreage	3	5	2	2	2	7	4	5	2	3	3	3	1	3		4	3	2	5	5	7	3		1	1	2	3	5	5		4

Average Monthly Sold Price - Elmore County



— Single Family	\$156	\$157	\$163	\$156	\$179	\$162	\$171	\$157	\$141	\$137	\$140	\$145	\$164	\$166	\$135	\$138	\$146	\$157	\$163	\$155	\$175	\$145	\$141	\$126	\$77,	\$162	\$140	\$135	\$142	\$122	\$125
— Single Family w/ Acreage	\$157	\$228	\$188	\$203	\$153	\$233	\$247	\$167	\$160	\$201	\$232	\$287	\$219	\$195		\$262	\$220	\$140	\$160	\$321	\$221	\$144		\$195	\$77,	\$228	\$170	\$207	\$233		\$142

Average Monthly Sale Ratio - Elmore County



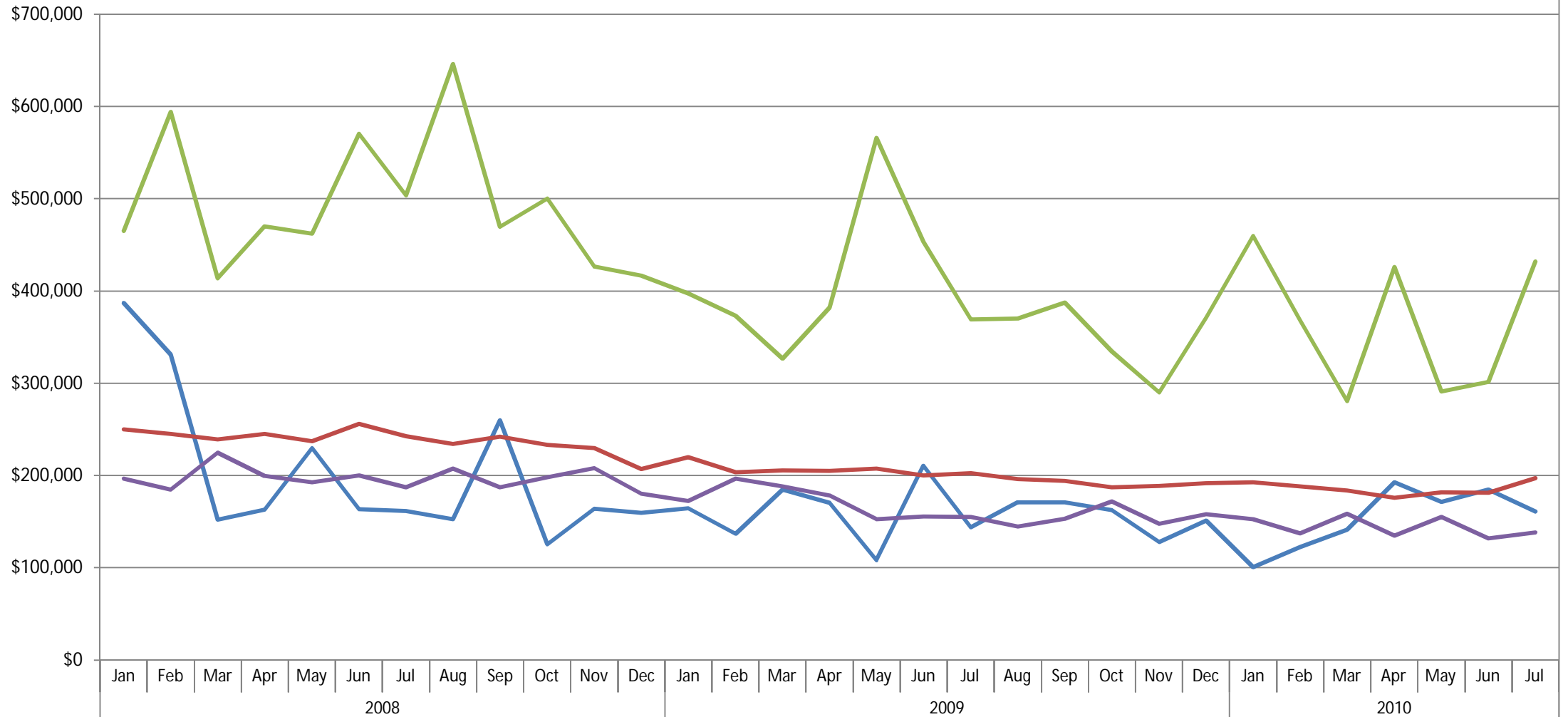
— Single Family	97.9	93.6	94.5	98.3	96.2	93.2	96.4	94.8	93.7	96.3	94.1	89.0	97.7	91.4	93.6	93.5	93.8	94.2	93.6	94.2	94.9	95.4	93.0	88.3	84.6	92.8	89.2	94.0	92.1	90.1	83.0
— Single Family w/ Acreage	84.7	95.2	100.0	94.4	97.6	97.0	94.1	90.9	84.6	88.3	99.4	95.2	91.5	94.0	97.7	92.6	90.0	90.3	95.2	93.9	94.4	97.5	82.0	85.1	91.2	88.3	93.7				94.7

Row Labels	Condo	Single Family	Single Family w/ Acreage	Townhouse	Grand Total
2005					
Jan	\$96,595	\$195,471	\$395,781	\$133,743	\$199,402
Feb	\$203,700	\$197,795	\$325,850	\$135,894	\$198,128
Mar	\$128,153	\$202,494	\$329,543	\$134,539	\$203,884
Apr	\$166,050	\$200,872	\$352,384	\$151,062	\$203,558
May	\$139,045	\$209,272	\$370,114	\$136,692	\$210,566
Jun	\$164,490	\$214,487	\$368,537	\$141,268	\$216,210
Jul	\$159,604	\$221,920	\$396,044	\$139,573	\$224,721
Aug	\$156,616	\$226,708	\$431,297	\$137,878	\$229,755
Sep	\$121,160	\$228,681	\$437,165	\$168,958	\$231,563
Oct	\$126,760	\$236,759	\$439,378	\$174,237	\$240,276
Nov	\$175,400	\$235,680	\$423,494	\$155,802	\$238,390
Dec	\$122,481	\$240,628	\$459,306	\$159,290	\$244,358
2006					
Jan	\$260,780	\$246,041	\$514,846	\$161,226	\$250,605
Feb	\$161,463	\$247,836	\$414,533	\$181,149	\$248,885
Mar	\$311,629	\$255,105	\$479,756	\$174,040	\$262,373
Apr	\$233,341	\$256,606	\$491,480	\$175,473	\$259,708
May	\$220,734	\$251,286	\$421,983	\$195,550	\$253,347
Jun	\$185,341	\$269,705	\$532,299	\$180,135	\$273,853
Jul	\$223,070	\$277,207	\$480,397	\$187,685	\$280,303
Aug	\$238,382	\$272,551	\$486,185	\$180,341	\$273,892
Sep	\$141,838	\$273,393	\$439,307	\$194,778	\$272,949
Oct	\$280,505	\$266,497	\$465,699	\$199,426	\$268,847
Nov	\$155,579	\$273,819	\$396,461	\$174,940	\$268,477
Dec	\$167,449	\$267,031	\$558,317	\$192,952	\$268,588
2007					
Jan	\$193,332	\$255,265	\$545,944	\$218,973	\$259,980
Feb	\$149,531	\$266,239	\$509,500	\$192,626	\$266,036
Mar	\$192,704	\$257,317	\$502,134	\$186,460	\$261,202
Apr	\$179,161	\$259,389	\$527,490	\$189,271	\$261,898
May	\$206,869	\$276,706	\$509,725	\$222,561	\$276,625
Jun	\$191,657	\$274,421	\$417,027	\$205,233	\$272,410
Jul	\$184,719	\$276,982	\$512,282	\$210,298	\$278,834
Aug	\$204,283	\$271,499	\$580,629	\$211,436	\$277,051
Sep	\$192,891	\$261,007	\$505,190	\$206,124	\$261,356
Oct	\$164,544	\$265,214	\$462,047	\$187,805	\$263,002
Nov	\$227,440	\$252,389	\$409,049	\$195,955	\$253,454
Dec	\$293,420	\$247,906	\$625,404	\$207,014	\$257,038
2008					
Jan	\$387,190	\$249,855	\$465,220	\$196,579	\$260,263
Feb	\$331,185	\$245,317	\$594,192	\$184,850	\$257,176

County Ada

Row Labels	Condo	Single Family	Single Family w/ Acreage	Townhouse	Grand Total
2005					
Mar	\$152,108	\$239,143	\$413,544	\$224,886	\$239,562
Apr	\$163,144	\$245,030	\$469,800	\$199,471	\$245,129
May	\$229,715	\$237,090	\$462,139	\$192,904	\$244,166
Jun	\$163,364	\$255,845	\$570,306	\$200,090	\$261,132
Jul	\$161,459	\$242,544	\$503,622	\$187,051	\$246,532
Aug	\$152,569	\$234,378	\$645,900	\$207,561	\$241,847
Sep	\$259,788	\$242,145	\$469,682	\$187,049	\$247,052
Oct	\$125,415	\$233,446	\$500,013	\$198,099	\$242,385
Nov	\$163,884	\$229,708	\$426,713	\$207,929	\$233,286
Dec	\$159,500	\$207,131	\$416,396	\$180,431	\$212,774
2009					
Jan	\$164,680	\$219,741	\$397,528	\$172,232	\$221,885
Feb	\$136,950	\$203,643	\$372,945	\$196,541	\$209,372
Mar	\$184,638	\$205,372	\$326,533	\$188,048	\$206,685
Apr	\$170,457	\$204,800	\$381,814	\$178,221	\$208,640
May	\$108,172	\$207,714	\$565,992	\$152,868	\$212,066
Jun	\$210,233	\$199,941	\$453,279	\$155,619	\$205,552
Jul	\$143,970	\$202,334	\$369,026	\$155,325	\$202,658
Aug	\$171,122	\$196,310	\$370,242	\$144,708	\$198,788
Sep	\$170,777	\$194,050	\$387,606	\$152,916	\$198,975
Oct	\$162,391	\$187,225	\$334,727	\$172,020	\$190,581
Nov	\$128,092	\$188,642	\$290,306	\$147,541	\$187,717
Dec	\$151,247	\$191,856	\$371,217	\$158,275	\$197,293
2010					
Jan	\$100,950	\$192,654	\$459,740	\$152,614	\$198,759
Feb	\$122,657	\$188,463	\$368,179	\$137,121	\$195,936
Mar	\$141,125	\$183,542	\$280,662	\$158,453	\$185,290
Apr	\$192,516	\$175,966	\$426,240	\$134,806	\$180,846
May	\$171,177	\$181,843	\$291,058	\$155,351	\$182,816
Jun	\$184,658	\$181,401	\$301,468	\$131,874	\$183,677
Jul	\$160,971	\$197,198	\$431,858	\$138,149	\$203,924

Average Monthly Sold Price - Ada County



	Jan	Feb	Mar	Apr	May	Jun	Jul	Aug	Sep	Oct	Nov	Dec	Jan	Feb	Mar	Apr	May	Jun	Jul	Aug	Sep	Oct	Nov	Dec	Jan	Feb	Mar	Apr	May	Jun	Jul					
	2008												2009												2010											
Condo	\$387,	\$331,	\$152,	\$163,	\$229,	\$163,	\$161,	\$152,	\$259,	\$125,	\$163,	\$159,	\$164,	\$136,	\$184,	\$170,	\$108,	\$210,	\$143,	\$171,	\$170,	\$162,	\$128,	\$151,	\$100,	\$122,	\$141,	\$192,	\$171,	\$184,	\$160,					
Single Family	\$249,	\$245,	\$239,	\$245,	\$237,	\$255,	\$242,	\$234,	\$242,	\$233,	\$229,	\$207,	\$219,	\$203,	\$205,	\$204,	\$207,	\$199,	\$202,	\$196,	\$194,	\$187,	\$188,	\$191,	\$192,	\$188,	\$183,	\$175,	\$181,	\$181,	\$197,					
Single Family w/ Acreage	\$465,	\$594,	\$413,	\$469,	\$462,	\$570,	\$503,	\$645,	\$469,	\$500,	\$426,	\$416,	\$397,	\$372,	\$326,	\$381,	\$565,	\$453,	\$369,	\$370,	\$387,	\$334,	\$290,	\$371,	\$459,	\$368,	\$280,	\$426,	\$291,	\$301,	\$431,					
Townhouse	\$196,	\$184,	\$224,	\$199,	\$192,	\$200,	\$187,	\$207,	\$187,	\$198,	\$207,	\$180,	\$172,	\$196,	\$188,	\$178,	\$152,	\$155,	\$155,	\$144,	\$152,	\$172,	\$147,	\$158,	\$152,	\$137,	\$158,	\$134,	\$155,	\$131,	\$138,					

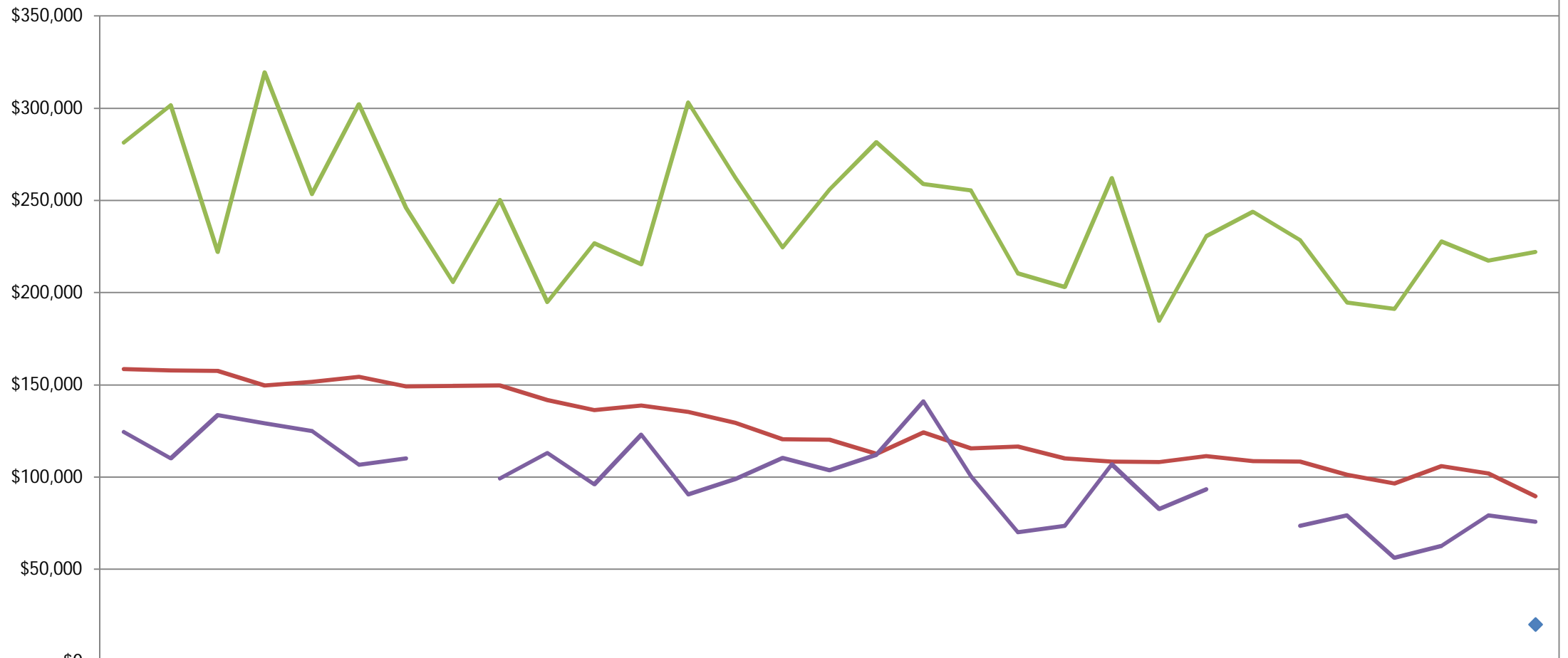
County

Canyon

Row Labels	Condo	Single Family	Single Family w/ Acreage	Townhouse	Grand Total
2005					
Jan	\$54,700	\$113,999	\$191,284	\$97,220	\$121,892
Feb		\$116,411	\$207,131	\$69,900	\$124,412
Mar		\$116,978	\$213,597	\$138,900	\$128,536
Apr		\$122,876	\$210,298	\$103,491	\$132,413
May		\$122,443	\$205,400	\$101,344	\$129,571
Jun		\$124,441	\$231,684	\$98,750	\$134,248
Jul		\$134,037	\$246,101	\$103,832	\$144,707
Aug		\$140,007	\$236,985	\$101,429	\$149,515
Sep		\$138,106	\$273,415	\$101,675	\$150,435
Oct	\$164,000	\$145,812	\$260,823	\$115,050	\$153,089
Nov		\$147,742	\$261,317	\$121,270	\$157,020
Dec		\$145,034	\$289,470	\$126,442	\$158,321
2006					
Jan		\$156,120	\$287,809	\$115,336	\$165,576
Feb	\$49,616	\$150,732	\$293,328	\$125,027	\$162,714
Mar		\$159,159	\$280,507	\$114,914	\$168,400
Apr	\$52,500	\$164,229	\$303,321	\$132,650	\$175,295
May	\$58,000	\$170,838	\$272,083	\$128,024	\$178,762
Jun		\$171,745	\$300,643	\$127,723	\$181,726
Jul	\$59,900	\$176,419	\$291,571	\$127,824	\$184,056
Aug		\$167,838	\$347,298	\$128,372	\$179,907
Sep	\$64,500	\$174,442	\$304,779	\$187,760	\$185,513
Oct		\$171,052	\$305,253	\$172,267	\$182,072
Nov		\$178,318	\$246,816	\$128,200	\$183,732
Dec		\$176,588	\$343,309	\$117,475	\$187,481
2007					
Jan		\$175,894	\$283,813	\$113,600	\$185,132
Feb	\$51,000	\$173,628	\$289,790	\$119,350	\$178,941
Mar	\$63,833	\$169,554	\$310,977	\$130,482	\$179,584
Apr	\$69,900	\$165,542	\$277,610	\$136,411	\$173,380
May		\$176,517	\$284,618	\$211,500	\$183,375
Jun		\$171,314	\$319,728	\$162,890	\$186,493
Jul		\$172,471	\$348,541	\$144,126	\$190,268
Aug		\$175,744	\$320,845	\$136,875	\$193,910
Sep		\$163,584	\$287,809	\$129,000	\$178,138
Oct		\$168,500	\$304,617	\$131,708	\$178,491
Nov	\$59,500	\$166,431	\$340,700	\$142,250	\$186,467
Dec		\$160,343	\$328,698	\$135,494	\$177,438
2008					
Jan		\$158,584	\$281,514	\$124,400	\$169,594
Feb		\$157,840	\$301,780	\$110,000	\$174,977

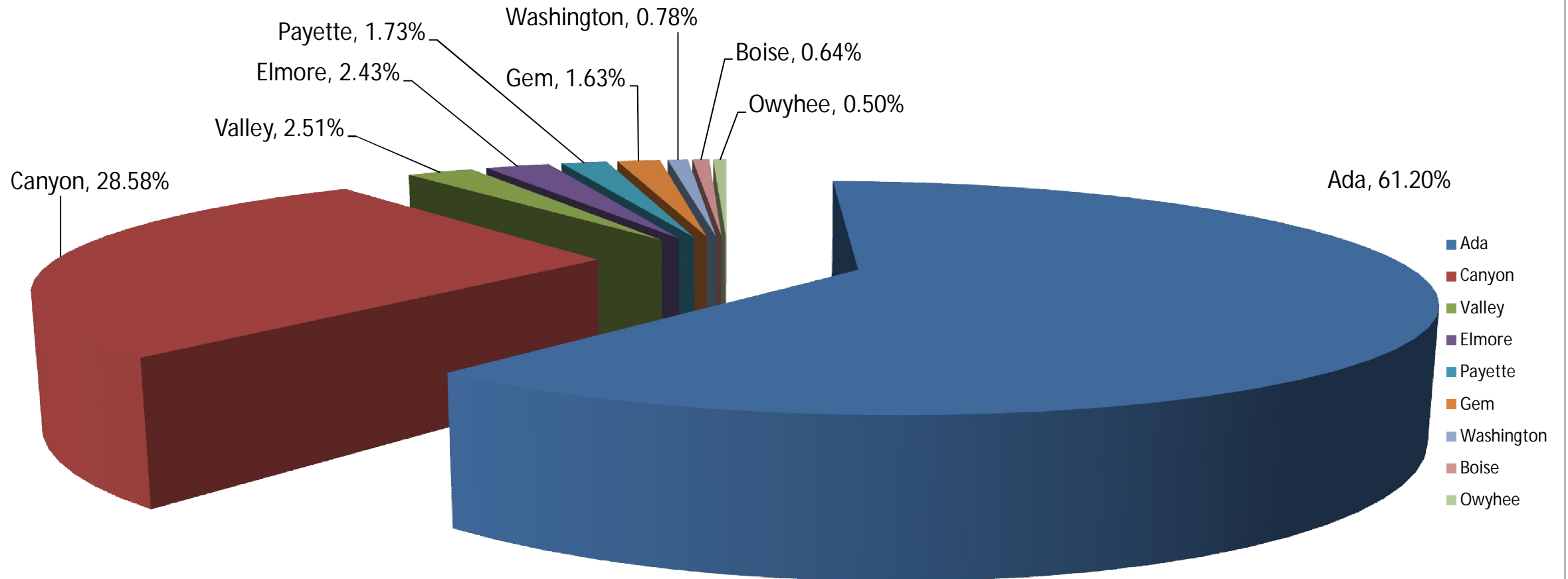
Row Labels	Condo	Single Family	Single Family w/ Acreage	Townhouse	Grand Total
2005					
Mar		\$157,529	\$222,035	\$133,682	\$162,161
Apr		\$149,721	\$319,407	\$129,052	\$161,744
May		\$151,660	\$253,547	\$125,000	\$158,548
Jun		\$154,409	\$302,233	\$106,700	\$166,231
Jul		\$149,048	\$245,971	\$110,000	\$159,084
Aug		\$149,403	\$205,825		\$154,934
Sep		\$149,606	\$250,257	\$99,175	\$161,664
Oct		\$141,713	\$194,934	\$113,000	\$145,832
Nov		\$136,251	\$226,658	\$96,000	\$144,098
Dec		\$138,836	\$215,377	\$123,000	\$145,194
2009					
Jan		\$135,246	\$303,123	\$90,670	\$150,799
Feb		\$129,326	\$262,192	\$99,000	\$143,943
Mar		\$120,370	\$224,544	\$110,333	\$125,740
Apr		\$120,165	\$255,881	\$103,700	\$134,074
May		\$112,555	\$281,610	\$112,000	\$128,617
Jun		\$124,126	\$258,949	\$141,000	\$141,100
Jul		\$115,609	\$255,463	\$100,500	\$131,151
Aug		\$116,623	\$210,431	\$70,000	\$127,248
Sep		\$110,042	\$203,063	\$73,479	\$118,633
Oct		\$108,264	\$262,180	\$106,878	\$121,866
Nov		\$108,066	\$184,634	\$82,667	\$114,746
Dec		\$111,259	\$230,486	\$93,300	\$122,728
2010					
Jan		\$108,633	\$243,754		\$120,168
Feb		\$108,316	\$228,506	\$73,580	\$121,605
Mar		\$101,209	\$194,600	\$79,250	\$108,839
Apr		\$96,474	\$191,198	\$56,250	\$107,636
May		\$105,911	\$227,875	\$62,725	\$118,139
Jun		\$101,877	\$217,405	\$79,267	\$112,775
Jul	\$20,000	\$89,620	\$221,957	\$75,699	\$109,029

Average Monthly Sold Price - Canyon County



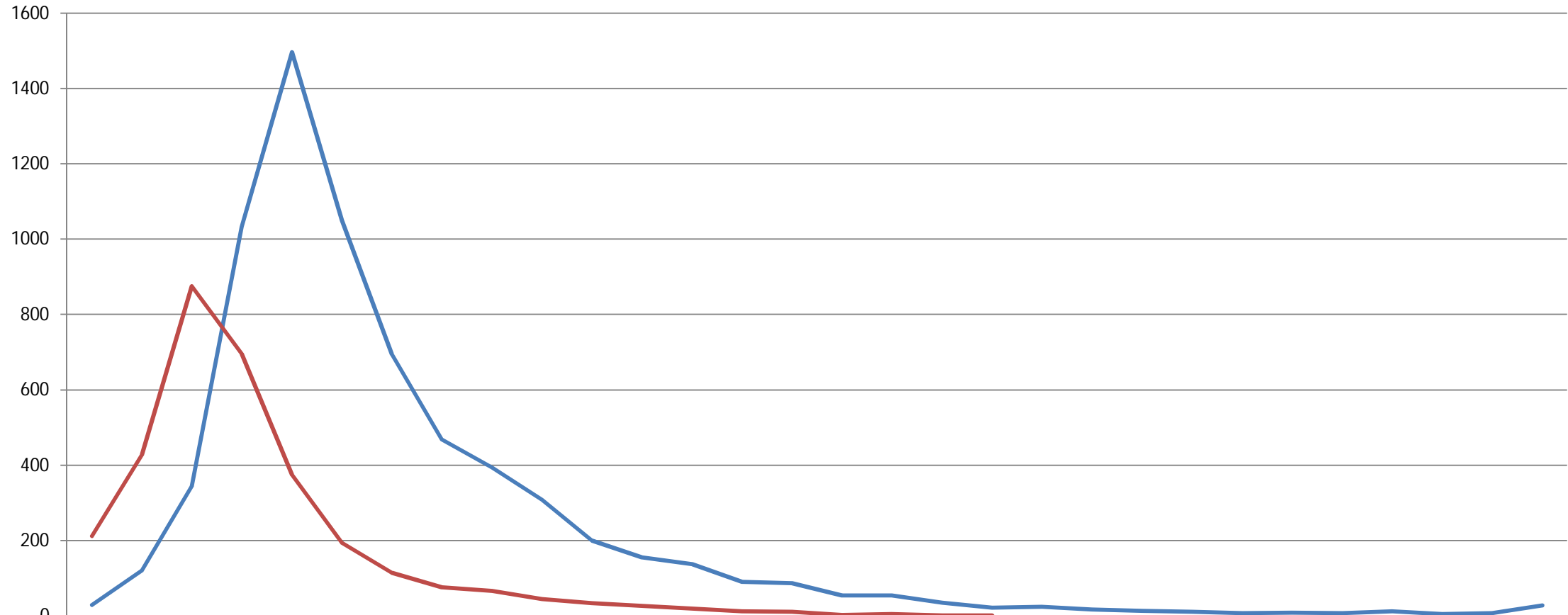
	Jan	Feb	Mar	Apr	May	Jun	Jul	Aug	Sep	Oct	Nov	Dec	Jan	Feb	Mar	Apr	May	Jun	Jul	Aug	Sep	Oct	Nov	Dec	Jan	Feb	Mar	Apr	May	Jun	Jul					
	2008												2009												2010											
◆ Condo																																\$20,0				
— Single Family	\$158,	\$157,	\$157,	\$149,	\$151,	\$154,	\$149,	\$149,	\$149,	\$141,	\$136,	\$138,	\$135,	\$129,	\$120,	\$120,	\$112,	\$124,	\$115,	\$116,	\$110,	\$108,	\$108,	\$111,	\$108,	\$108,	\$101,	\$96,4	\$105,	\$101,	\$89,6					
— Single Family w/ Acreage	\$281,	\$301,	\$222,	\$319,	\$253,	\$302,	\$245,	\$205,	\$250,	\$194,	\$226,	\$215,	\$303,	\$262,	\$224,	\$255,	\$281,	\$258,	\$255,	\$210,	\$203,	\$262,	\$184,	\$230,	\$243,	\$228,	\$194,	\$191,	\$227,	\$217,	\$221,					
— Townhouse	\$124,	\$110,	\$133,	\$129,	\$125,	\$106,	\$110,		\$99,1	\$113,	\$96,0	\$123,	\$90,6	\$99,0	\$110,	\$103,	\$112,	\$141,	\$100,	\$70,0	\$73,4	\$106,	\$82,6	\$93,3		\$73,5	\$79,2	\$56,2	\$62,7	\$79,2	\$75,6					

12 Month Sales (8/1/2009 - 7/31/2010) 11,329 Total Sales
Single Family, Single Family w/ Acreage, Townhouse, Condo



Last 12 Months Sales - Sold Distribution Curve - Ada & Canyon County 10,118 Total Sales

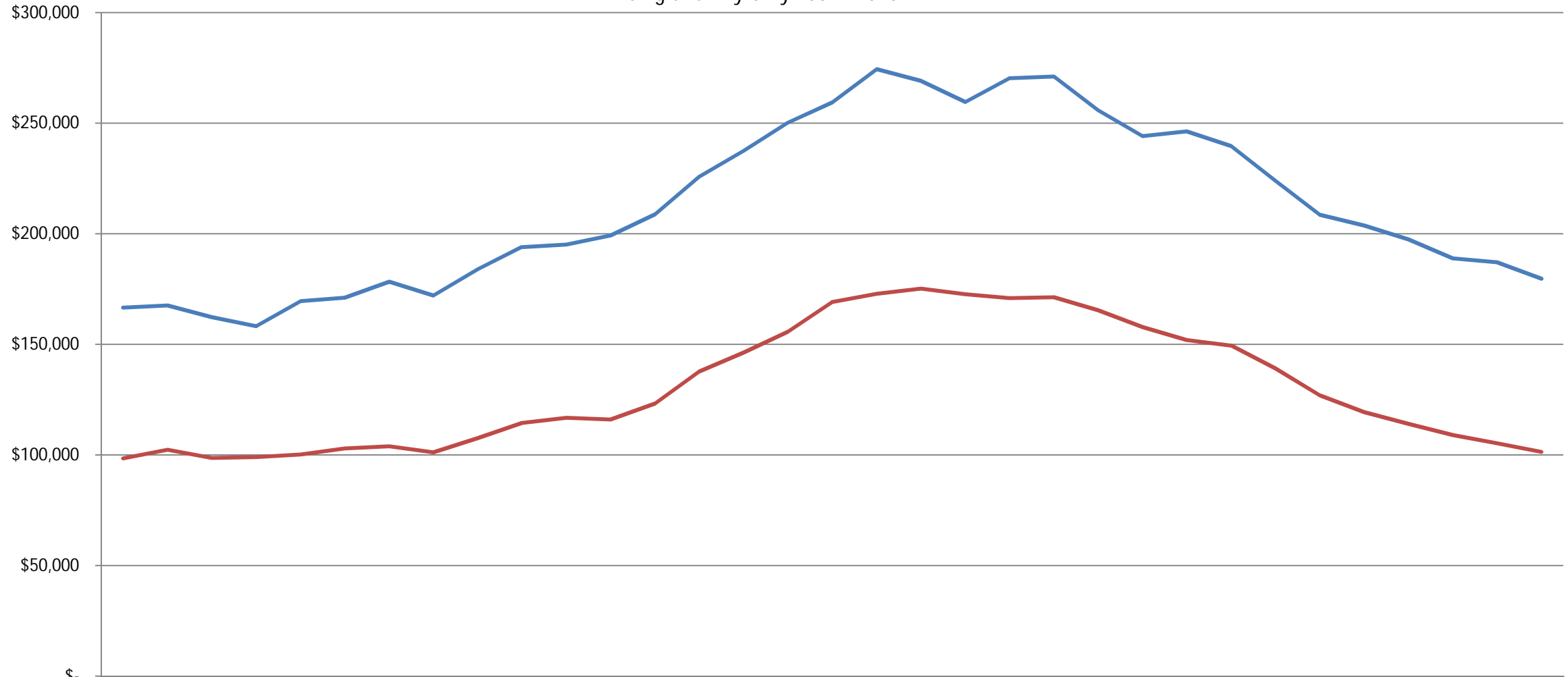
Single Family, & Single Family w/ Acreage, Townhouse, Condo (8/1/2009 - 7/31/2010)



	25000-49999	50000-74999	75000-99999	100000-124999	125000-149999	150000-174999	175000-199999	200000-224999	225000-249999	250000-274999	275000-299999	300000-324999	325000-349999	350000-374999	375000-399999	400000-424999	425000-449999	450000-474999	475000-499999	500000-524999	525000-549999	550000-574999	575000-599999	600000-624999	625000-649999	650000-674999	675000-699999	700000-724999	725000-750000	>750000
Ada	29	121	345	1033	1496	1050	695	468	394	308	200	155	137	91	87	54	55	35	22	24	17	13	11	8	9	8	12	5	8	28
Canyon	212	428	875	696	375	194	115	76	67	45	34	27	20	12	11	3	5	1	2				1						1	

Average Quarter Sold Price- Single Family - Ada & Canyon

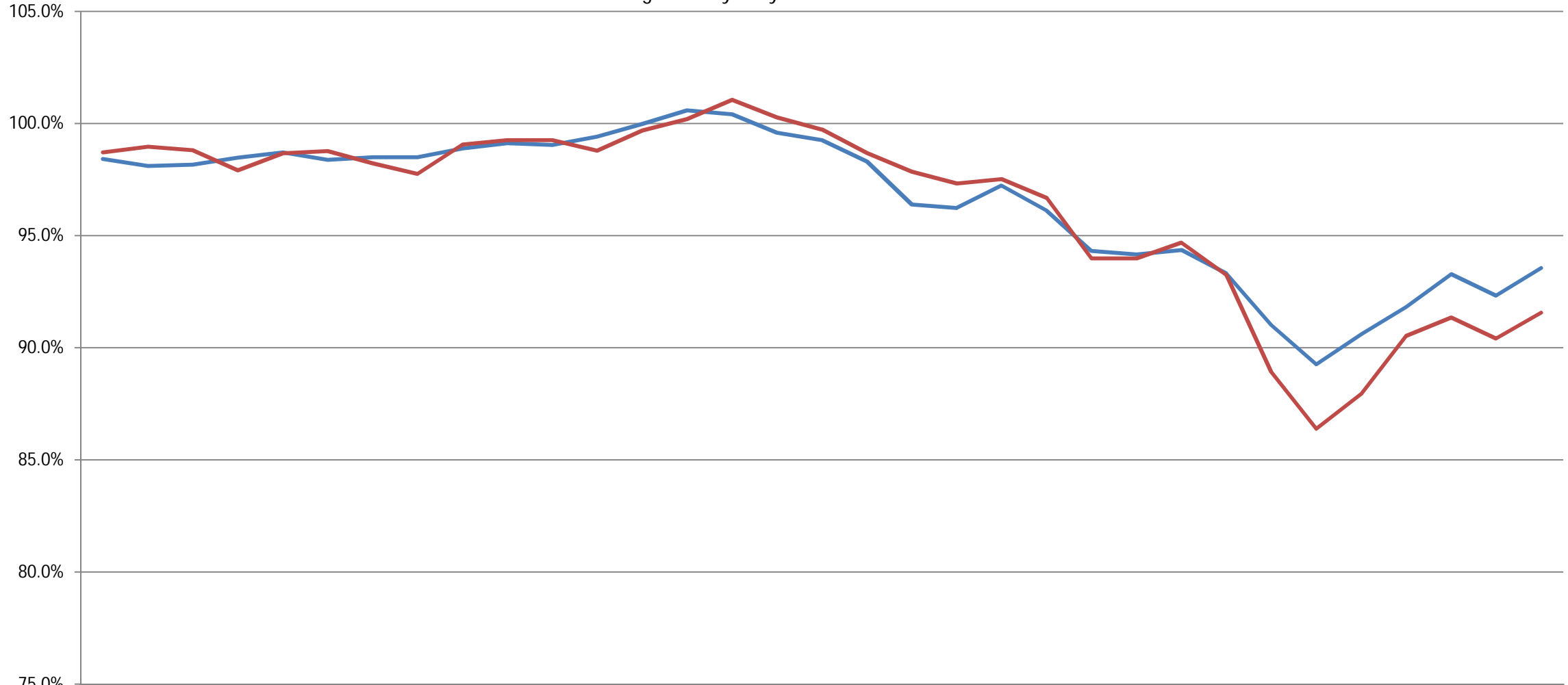
Single Family Only 2002 - 2010



	Qtr2	Qtr3	Qtr4	Qtr1	Qtr2	Qtr3	Qtr4	Qtr1	Qtr2	Qtr3	Qtr4	Qtr1	Qtr2	Qtr3	Qtr4	Qtr1	Qtr2	Qtr3	Qtr4	Qtr1	Qtr2	Qtr3	Qtr4	Qtr1	Qtr2	Qtr3	Qtr4	Qtr1	Qtr2	Qtr3	Qtr4	Qtr1	Qtr2	
	2002				2003				2004				2005				2006				2007				2008				2009				2010	
— Ada	\$166,	\$167,	\$162,	\$158,	\$169,	\$171,	\$178,	\$171,	\$184,	\$194,	\$195,	\$199,	\$208,	\$225,	\$237,	\$250,	\$259,	\$274,	\$269,	\$259,	\$270,	\$271,	\$255,	\$244,	\$246,	\$239,	\$224,	\$208,	\$203,	\$197,	\$188,	\$187,	\$179,	
— Canyon	\$98,4	\$102,	\$98,7	\$99,0	\$100,	\$102,	\$103,	\$101,	\$107,	\$114,	\$116,	\$116,	\$123,	\$137,	\$146,	\$155,	\$169,	\$172,	\$175,	\$172,	\$170,	\$171,	\$165,	\$157,	\$152,	\$149,	\$139,	\$127,	\$119,	\$114,	\$108,	\$105,	\$101,	

Average Quarter Sales Ratio- Single Family - Ada & Canyon

Single Family Only 2002 - 2010



	Qtr2	Qtr3	Qtr4	Qtr1	Qtr2	Qtr3	Qtr4	Qtr1	Qtr2	Qtr3	Qtr4	Qtr1	Qtr2	Qtr3	Qtr4	Qtr1	Qtr2	Qtr3	Qtr4	Qtr1	Qtr2	Qtr3	Qtr4	Qtr1	Qtr2	Qtr3	Qtr4	Qtr1	Qtr2	Qtr3	Qtr4	Qtr1	Qtr2
	2002			2003				2004				2005				2006				2007				2008				2009				2010	
— Ada	98.4%	98.1%	98.2%	98.5%	98.7%	98.4%	98.5%	98.5%	98.9%	99.1%	99.0%	99.4%	100.0%	100.6%	100.4%	99.6%	99.3%	98.3%	96.4%	96.2%	97.2%	96.1%	94.3%	94.2%	94.4%	93.3%	91.0%	89.3%	90.6%	91.8%	93.3%	92.3%	93.6%
— Canyon	98.7%	99.0%	98.8%	97.9%	98.7%	98.8%	98.2%	97.8%	99.1%	99.3%	99.3%	98.8%	99.7%	100.2%	101.1%	100.3%	99.7%	98.7%	97.9%	97.3%	97.5%	96.7%	94.0%	94.0%	94.7%	93.2%	88.9%	86.4%	88.0%	90.5%	91.4%	90.4%	91.6%

Type Single Family

Average Monthly Sold Price

Single Family

MLS Area	2007											2008					
	Jan	Feb	Mar	Apr	May	Jun	Jul	Aug	Sep	Oct	Nov	Dec	Jan	Feb	Mar	Apr	May
North Boise - 0100	\$314,556	\$358,881	\$328,236	\$358,376	\$402,587	\$368,325	\$334,345	\$336,430	\$330,417	\$290,583	\$279,084	\$320,265	\$348,096	\$409,867	\$325,600	\$335,405	\$395,629
NE Boise - 0200	\$259,625	\$337,933	\$369,281	\$386,313	\$467,691	\$434,487	\$416,340	\$471,144	\$525,625	\$339,375	\$333,488	\$596,500	\$285,000	\$335,331	\$363,964	\$375,908	\$363,800
SE Boise - 0300	\$283,077	\$284,615	\$259,566	\$268,451	\$257,805	\$308,261	\$246,186	\$292,444	\$280,437	\$287,776	\$279,960	\$240,259	\$302,345	\$262,981	\$286,440	\$287,450	\$303,778
Boise Bench - 0400	\$191,444	\$190,374	\$180,108	\$185,424	\$200,220	\$188,295	\$194,349	\$199,821	\$198,941	\$202,485	\$169,093	\$175,427	\$170,628	\$165,031	\$161,637	\$181,988	\$183,641
South Boise - 0500	\$210,353	\$214,232	\$229,956	\$266,561	\$227,105	\$229,543	\$273,162	\$246,268	\$258,131	\$211,757	\$233,263	\$255,786	\$213,683	\$205,759	\$220,436	\$233,016	\$234,097
SW Boise-Meridian - 0550	\$236,546	\$237,660	\$229,736	\$249,855	\$253,073	\$242,288	\$262,709	\$248,338	\$240,237	\$238,530	\$252,096	\$215,924	\$216,148	\$209,106	\$220,052	\$219,172	\$201,464
West Boise - 0600	\$187,574	\$197,085	\$210,605	\$186,684	\$188,302	\$226,711	\$215,456	\$193,638	\$222,507	\$179,423	\$240,004	\$220,473	\$175,500	\$187,895	\$191,587	\$169,014	\$186,542
W Boise-Garden City - 0650	\$223,287	\$210,336	\$225,921	\$217,260	\$233,538	\$230,077	\$257,845	\$238,560	\$224,468	\$211,755	\$210,965	\$217,208	\$211,426	\$203,795	\$215,681	\$221,329	\$223,892
NW Boise - 0800	\$246,637	\$334,512	\$274,915	\$294,069	\$326,642	\$312,912	\$323,134	\$323,378	\$310,516	\$344,437	\$347,022	\$325,561	\$265,478	\$322,772	\$274,797	\$272,748	\$272,621
Garden City - 0700	\$178,500	\$183,000	\$179,900	\$167,875	\$182,125	\$225,000		\$172,375	\$177,000	\$160,000	\$137,167						\$800,000
Eagle - 0900	\$419,126	\$419,505	\$420,308	\$372,556	\$449,308	\$405,990	\$497,125	\$403,917	\$336,772	\$356,434	\$351,598	\$347,132	\$397,410	\$380,285	\$308,983	\$387,733	\$361,757
Star - 0950	\$298,281	\$259,557	\$233,654	\$238,921	\$282,929	\$281,872	\$273,206	\$276,929	\$274,845	\$273,466	\$271,460	\$265,973	\$226,040	\$248,433	\$212,936	\$186,538	\$203,239
SE Meridian - 1000	\$311,755	\$294,102	\$297,975	\$302,746	\$323,054	\$316,915	\$307,944	\$368,570	\$304,046	\$303,404	\$300,299	\$263,748	\$255,250	\$265,906	\$280,284	\$248,486	\$244,481
SW Meridian - 1010	\$348,270	\$369,638	\$367,342	\$400,167	\$263,625	\$458,980	\$399,900	\$221,833	\$391,600	\$405,629	\$206,000	\$167,250	\$328,333	\$313,327	\$390,000	\$364,500	\$371,725
NE Meridian - 1020	\$286,695	\$290,373	\$279,296	\$267,822	\$308,051	\$279,196	\$281,464	\$269,231	\$267,541	\$271,623	\$287,443	\$254,913	\$277,376	\$237,603	\$253,838	\$250,244	\$223,424
NW Meridian - 1030	\$250,011	\$260,171	\$245,053	\$241,950	\$244,451	\$264,772	\$253,168	\$249,448	\$232,673	\$265,025	\$223,753	\$234,522	\$249,554	\$229,951	\$227,614	\$233,842	\$215,599
Kuna - 1100	\$186,814	\$185,079	\$193,489	\$203,757	\$199,651	\$203,670	\$204,005	\$190,420	\$196,387	\$197,768	\$191,876	\$178,431	\$192,831	\$203,065	\$174,857	\$167,238	\$168,721
NE Nampa (87) - 1250	\$174,028	\$172,431	\$157,648	\$162,145	\$178,200	\$166,065	\$168,428	\$168,347	\$153,171	\$169,874	\$165,129	\$156,740	\$152,014	\$157,607	\$162,911	\$140,926	\$154,706
South Nampa (86) - 1260	\$202,098	\$205,213	\$193,840	\$181,096	\$193,401	\$188,408	\$195,051	\$192,237	\$191,429	\$188,101	\$191,717	\$174,280	\$167,532	\$183,997	\$175,139	\$173,255	\$173,170
NW Nampa (51) - 1270	\$169,089	\$177,014	\$159,289	\$160,527	\$151,080	\$160,848	\$172,391	\$156,800	\$154,225	\$150,002	\$155,829	\$152,429	\$156,495	\$147,295	\$137,784	\$133,218	\$134,962
Melba - 1265	\$148,750			\$189,900		\$90,750		\$127,667	\$141,250				\$170,000	\$99,000			\$115,000
NW Caldwell - 1275	\$169,634	\$145,165	\$161,767	\$157,179	\$169,889	\$150,131	\$148,959	\$161,658	\$127,915	\$145,572	\$146,286	\$133,176	\$136,269	\$153,291	\$130,827	\$136,073	\$140,637
SW Caldwell - 1280	\$157,652	\$147,845	\$157,131	\$151,474	\$161,078	\$164,420	\$161,267	\$173,691	\$159,291	\$163,088	\$160,880	\$151,292	\$155,966	\$139,097	\$155,324	\$146,665	\$138,031
Middleton - 1285	\$210,414	\$166,393	\$189,449	\$205,576	\$226,157	\$198,598	\$167,467	\$208,827	\$163,014	\$191,406	\$164,652	\$187,089	\$190,121	\$180,374	\$168,581	\$182,786	\$168,715
Canyon County Other - 1290	\$107,000	\$125,750	\$144,150	\$148,575	\$165,500	\$200,167	\$127,535	\$165,150	\$113,750	\$155,033	\$77,000	\$155,643	\$153,700	\$146,000	\$230,000	\$120,995	
Parma - 1292	\$82,950	\$179,900	\$105,333	\$77,500	\$122,771	\$115,900	\$87,500	\$167,325	\$105,000	\$117,450	\$70,000		\$119,750	\$122,333	\$120,800		\$127,000
Wilder - 1293		\$130,067	\$126,800	\$167,118	\$107,500	\$132,950	\$132,475	\$132,925	\$119,900	\$84,000	\$123,700		\$108,700	\$105,200	\$65,000	\$43,000	
Greenleaf - 1294	\$77,650				\$156,950	\$137,500	\$94,950		\$234,900		\$317,500	\$162,000		\$165,000	\$127,900	\$160,000	
Grand Total	\$228,204	\$238,342	\$230,584	\$228,817	\$247,399	\$242,984	\$244,001	\$245,333	\$230,767	\$231,898	\$226,286	\$219,367	\$222,326	\$218,152	\$211,309	\$219,147	\$212,224

Type

Average Monthly Sold Price

Single Family

MLS Area	2008						2009										
	Jun	Jul	Aug	Sep	Oct	Nov	Dec	Jan	Feb	Mar	Apr	May	Jun	Jul	Aug	Sep	Oct
North Boise - 0100	\$401,141	\$337,095	\$349,892	\$318,895	\$350,202	\$421,639	\$269,325	\$228,590	\$271,800	\$308,094	\$363,712	\$335,796	\$263,386	\$262,581	\$271,065	\$228,399	\$284,291
NE Boise - 0200	\$453,395	\$349,430	\$333,857	\$388,100	\$371,492	\$156,667	\$404,660	\$395,000	\$279,975	\$246,517	\$293,357	\$357,958	\$319,127	\$342,164	\$345,428	\$310,598	\$251,369
SE Boise - 0300	\$266,247	\$244,584	\$232,183	\$261,438	\$227,877	\$276,393	\$195,291	\$213,511	\$239,200	\$216,793	\$249,125	\$265,718	\$219,582	\$229,605	\$221,326	\$234,267	\$202,524
Boise Bench - 0400	\$175,885	\$180,976	\$175,557	\$193,410	\$194,777	\$150,758	\$158,568	\$146,789	\$143,235	\$156,736	\$147,286	\$153,167	\$152,934	\$145,779	\$140,934	\$149,318	\$143,365
South Boise - 0500	\$216,300	\$202,468	\$218,147	\$251,314	\$196,127	\$184,357	\$176,853	\$174,270	\$172,275	\$224,240	\$174,944	\$168,066	\$183,166	\$170,953	\$163,045	\$184,156	\$162,501
SW Boise-Meridian - 0550	\$202,398	\$233,036	\$206,527	\$221,419	\$211,852	\$197,035	\$189,430	\$190,451	\$168,614	\$182,517	\$167,132	\$186,754	\$163,977	\$169,734	\$173,411	\$165,967	\$163,043
West Boise - 0600	\$174,118	\$172,215	\$176,345	\$171,423	\$173,573	\$173,218	\$180,430	\$189,387	\$173,500	\$161,371	\$162,577	\$137,398	\$160,346	\$152,165	\$176,192	\$144,784	\$136,493
W Boise-Garden City - 0650	\$220,733	\$201,943	\$200,601	\$203,138	\$186,204	\$193,912	\$206,123	\$204,181	\$191,601	\$170,554	\$176,378	\$173,787	\$164,492	\$175,615	\$189,650	\$168,586	\$174,332
NW Boise - 0800	\$272,763	\$258,041	\$245,009	\$270,590	\$309,870	\$208,734	\$222,352	\$239,149	\$205,546	\$224,819	\$204,660	\$227,710	\$211,964	\$218,377	\$200,329	\$252,336	\$236,774
Garden City - 0700	\$175,000			\$159,000	\$221,167				\$449,900	\$115,450	\$179,000	\$199,967	\$50,000		\$161,633		\$372,250
Eagle - 0900	\$395,130	\$371,003	\$447,760	\$405,314	\$308,166	\$398,550	\$286,311	\$506,812	\$387,007	\$331,574	\$341,393	\$342,181	\$337,966	\$379,297	\$334,754	\$352,009	\$307,322
Star - 0950	\$241,053	\$286,291	\$273,709	\$269,106	\$288,391	\$203,190	\$243,676	\$239,555	\$172,229	\$241,723	\$201,467	\$166,250	\$199,457	\$205,280	\$232,791	\$182,783	\$173,168
SE Meridian - 1000	\$254,030	\$277,285	\$261,623	\$248,276	\$271,411	\$223,996	\$218,848	\$227,504	\$201,744	\$234,987	\$235,076	\$221,603	\$212,875	\$196,493	\$214,015	\$205,389	\$198,679
SW Meridian - 1010	\$304,425	\$473,895	\$338,342	\$277,800	\$324,200	\$269,833	\$515,000	\$107,000	\$210,200	\$242,450	\$249,150	\$147,600	\$313,333	\$242,583	\$228,750	\$258,831	\$340,557
NE Meridian - 1020	\$247,860	\$253,861	\$225,352	\$228,222	\$237,445	\$194,262	\$220,787	\$182,377	\$204,944	\$186,908	\$199,040	\$190,697	\$192,822	\$197,064	\$177,520	\$172,459	\$173,016
NW Meridian - 1030	\$236,186	\$221,788	\$215,643	\$222,222	\$216,148	\$191,836	\$179,540	\$201,912	\$201,778	\$196,281	\$177,638	\$184,218	\$177,040	\$179,620	\$179,397	\$176,729	\$167,931
Kuna - 1100	\$203,652	\$171,309	\$168,856	\$180,903	\$150,472	\$154,221	\$144,924	\$160,668	\$146,057	\$140,880	\$154,500	\$152,135	\$128,844	\$133,686	\$138,473	\$128,976	\$131,220
NE Nampa (87) - 1250	\$164,811	\$162,340	\$141,478	\$165,232	\$164,865	\$143,964	\$143,058	\$152,486	\$146,634	\$131,360	\$124,229	\$116,762	\$130,728	\$122,784	\$112,696	\$114,542	\$103,133
South Nampa (86) - 1260	\$183,019	\$168,650	\$161,462	\$166,367	\$141,817	\$157,655	\$163,530	\$161,510	\$137,350	\$136,710	\$128,935	\$124,137	\$137,448	\$136,433	\$132,079	\$116,897	\$128,414
NW Nampa (51) - 1270	\$129,473	\$137,392	\$152,110	\$130,964	\$131,807	\$145,835	\$121,111	\$136,078	\$124,591	\$118,701	\$109,927	\$115,022	\$103,966	\$106,140	\$108,289	\$102,088	\$105,049
Melba - 1265		\$85,000					\$70,363		\$95,000	\$92,000	\$123,500		\$85,000	\$68,200	\$110,700	\$193,000	
NW Caldwell - 1275	\$138,019	\$130,776	\$149,288	\$141,686	\$139,131	\$114,247	\$120,102	\$117,800	\$111,169	\$108,668	\$84,945	\$100,734	\$92,821	\$100,709	\$96,870	\$100,255	\$93,807
SW Caldwell - 1280	\$142,114	\$136,184	\$129,060	\$138,540	\$125,127	\$110,981	\$109,903	\$104,185	\$111,992	\$98,770	\$111,099	\$101,638	\$108,109	\$92,096	\$97,230	\$99,671	\$97,647
Middleton - 1285	\$171,721	\$157,593	\$172,409	\$143,577	\$193,467	\$142,472	\$196,350	\$125,551	\$141,329	\$134,852	\$144,424	\$109,318	\$171,407	\$154,385	\$155,161	\$119,973	\$123,860
Canyon County Other - 1290	\$153,245	\$130,605	\$138,904	\$159,500	\$97,000	\$85,950		\$130,000	\$120,000		\$149,750	\$131,000		\$86,425		\$98,500	\$90,300
Parma - 1292		\$136,000		\$46,250	\$111,400	\$82,650		\$49,450		\$80,000		\$112,200	\$134,900		\$132,500	\$50,000	\$59,900
Wilder - 1293			\$40,000	\$120,000	\$82,450	\$117,400	\$159,900			\$83,150			\$20,000	\$118,267			\$115,000
Greenleaf - 1294			\$125,000			\$107,900			\$159,900	\$145,950		\$89,500	\$92,000		\$164,900		\$105,000
Grand Total	\$228,694	\$215,519	\$211,180	\$217,149	\$208,884	\$202,939	\$186,117	\$195,178	\$184,914	\$180,930	\$180,599	\$178,581	\$177,363	\$175,029	\$174,127	\$170,439	\$162,701

Type

Average Monthly Sold Price

Single Family

MLS Area	2009		2010						
	Nov	Dec	Jan	Feb	Mar	Apr	May	Jun	Jul
North Boise - 0100	\$321,690	\$234,875	\$253,398	\$217,837	\$269,612	\$261,317	\$223,229	\$308,053	\$278,782
NE Boise - 0200	\$321,629	\$408,000	\$337,000	\$349,550	\$318,457	\$312,625	\$393,795	\$335,762	\$304,242
SE Boise - 0300	\$216,931	\$228,141	\$202,923	\$180,512	\$200,220	\$194,471	\$188,909	\$216,535	\$224,622
Boise Bench - 0400	\$128,857	\$124,045	\$152,341	\$124,338	\$124,871	\$127,084	\$134,515	\$115,625	\$98,695
South Boise - 0500	\$171,182	\$185,900	\$151,317	\$186,173	\$144,900	\$184,203	\$159,273	\$155,272	\$147,256
SW Boise-Meridian - 0550	\$156,242	\$179,288	\$168,201	\$183,530	\$160,761	\$155,322	\$157,032	\$158,618	\$164,082
West Boise - 0600	\$138,927	\$150,925	\$162,612	\$135,421	\$132,127	\$142,178	\$135,933	\$133,724	\$149,782
W Boise-Garden City - 0650	\$171,108	\$152,083	\$156,292	\$171,550	\$146,193	\$151,809	\$154,121	\$154,810	\$161,542
NW Boise - 0800	\$227,337	\$221,346	\$212,049	\$205,203	\$190,633	\$190,022	\$182,813	\$178,069	\$205,681
Garden City - 0700	\$120,000	\$170,100	\$90,000	\$300,000		\$105,900	\$99,150	\$208,915	\$63,100
Eagle - 0900	\$354,555	\$360,892	\$315,286	\$315,708	\$322,022	\$283,908	\$290,992	\$296,113	\$320,027
Star - 0950	\$201,943	\$178,478	\$186,732	\$175,185	\$185,597	\$159,988	\$154,027	\$144,433	\$198,054
SE Meridian - 1000	\$208,787	\$205,714	\$223,581	\$178,473	\$178,746	\$194,368	\$189,733	\$202,450	\$224,706
SW Meridian - 1010	\$235,000	\$188,250	\$230,837	\$214,900	\$227,510	\$197,511	\$228,180	\$222,140	\$225,700
NE Meridian - 1020	\$172,999	\$195,244	\$182,841	\$183,260	\$187,042	\$174,117	\$184,446	\$191,152	\$185,531
NW Meridian - 1030	\$169,632	\$170,758	\$171,698	\$182,927	\$164,797	\$163,094	\$159,140	\$174,189	\$178,516
Kuna - 1100	\$130,080	\$133,737	\$133,964	\$142,412	\$124,211	\$125,365	\$128,590	\$132,718	\$123,640
NE Nampa (87) - 1250	\$113,506	\$110,200	\$107,327	\$99,245	\$91,437	\$92,806	\$109,441	\$96,362	\$91,677
South Nampa (86) - 1260	\$124,282	\$136,804	\$133,532	\$126,221	\$126,927	\$104,882	\$119,251	\$118,862	\$102,959
NW Nampa (51) - 1270	\$104,293	\$101,378	\$102,676	\$89,813	\$85,200	\$92,271	\$96,500	\$94,622	\$78,781
Melba - 1265		\$71,000		\$109,000			\$53,633	\$105,900	\$62,150
NW Caldwell - 1275	\$95,359	\$90,186	\$83,488	\$98,642	\$90,286	\$102,829	\$97,655	\$91,798	\$73,549
SW Caldwell - 1280	\$93,450	\$92,691	\$91,997	\$100,083	\$92,217	\$81,594	\$97,299	\$87,130	\$79,474
Middleton - 1285	\$112,805	\$153,210	\$121,612	\$122,067	\$110,017	\$125,149	\$121,194	\$126,117	\$93,720
Canyon County Other - 1290	\$99,755	\$80,107	\$336,900	\$37,532	\$104,995	\$244,927	\$65,300	\$77,167	\$99,000
Parma - 1292	\$84,000			\$158,750	\$103,667	\$71,390	\$61,633	\$82,933	\$48,450
Wilder - 1293	\$78,500	\$79,850		\$29,900	\$104,385	\$18,274	\$79,950		
Greenleaf - 1294		\$115,000	\$160,000			\$69,900			
Grand Total	\$161,310	\$163,914	\$163,748	\$161,439	\$157,677	\$151,708	\$158,460	\$156,560	\$161,459

Type	Single Family w/ Acreage
------	-----------------------------

Average Monthly Sold Price

Single Family w/ Acreage

MLS Area	2007												2008			
	Jan	Feb	Mar	Apr	May	Jun	Jul	Aug	Sep	Oct	Nov	Dec	Jan	Feb	Mar	Apr
North Boise - 0100																
NE Boise - 0200			\$276,000					\$1,300,000				\$915,000				
SE Boise - 0300			\$640,000			\$395,000				\$457,500						
Boise Bench - 0400					\$160,100				\$804,000			\$250,000				
South Boise - 0500	\$354,967		\$317,950		\$379,900	\$551,633	\$225,000	\$244,933		\$405,650	\$285,000	\$279,900	\$345,950	\$372,500	\$400,000	
SW Boise-Meridian - 0550	\$324,967	\$671,000	\$338,725	\$286,277	\$346,333	\$332,667	\$287,917			\$259,900	\$263,000	\$185,207	\$296,125		\$212,000	
West Boise - 0600	\$519,975	\$325,000	\$412,000	\$180,000		\$349,900		\$240,000	\$485,000					\$255,000	\$180,000	
W Boise-Garden City - 0650		\$276,700		\$560,000		\$289,800	\$345,000								\$211,250	
NW Boise - 0800	\$280,000		\$497,000				\$466,667	\$454,500	\$385,000		\$715,000	\$700,000	\$334,000		\$349,900	
Eagle - 0900	\$960,153	\$685,750	\$821,000	\$625,660	\$581,000	\$557,580	\$798,429	\$762,286	\$642,000	\$650,000	\$551,000	\$522,500	\$930,625	\$785,000	\$990,000	\$513,757
Star - 0950	\$450,000	\$584,000	\$285,000	\$586,000	\$686,250	\$450,000	\$620,000	\$616,360			\$215,000			\$317,500		\$501,500
SE Meridian - 1000			\$1,200,000						\$439,450	\$421,667		\$320,000				
SW Meridian - 1010	\$953,000	\$455,000	\$529,250	\$605,000	\$281,000	\$333,333	\$445,667	\$990,000	\$325,000	\$560,500	\$329,513		\$366,000			\$455,000
NE Meridian - 1020		\$391,500			\$415,000				\$700,000			\$410,000				
NW Meridian - 1030			\$495,000			\$245,000		\$426,750		\$444,000		\$1,387,169				
Kuna - 1100		\$441,896	\$381,975	\$302,000	\$567,375	\$397,067	\$296,825	\$245,000	\$190,000	\$460,000	\$212,804		\$226,467	\$182,000	\$177,500	\$307,500
NE Nampa (87) - 1250	\$265,000	\$190,000	\$329,500	\$442,500	\$284,500	\$396,250	\$427,333	\$299,643	\$294,950	\$230,000	\$278,250	\$375,000	\$273,333	\$185,000	\$206,567	\$407,500
South Nampa (86) - 1260	\$298,500	\$273,950	\$295,022	\$285,580	\$294,950	\$274,915	\$413,700	\$338,271	\$295,367	\$386,250	\$362,250	\$327,475	\$236,000	\$371,000	\$325,375	\$239,900
NW Nampa (51) - 1270	\$270,500		\$192,977	\$329,000			\$324,000	\$470,000	\$286,000	\$335,000						\$402,500
Melba - 1265				\$194,000		\$469,333	\$200,000	\$485,000	\$181,500		\$245,000	\$185,000	\$334,950	\$292,000		
NW Caldwell - 1275		\$380,000	\$370,000	\$203,000	\$207,900	\$230,000	\$230,100	\$162,300		\$170,000						
SW Caldwell - 1280	\$393,000	\$379,950	\$221,270	\$300,133	\$422,075	\$421,300	\$267,617	\$202,333		\$446,667	\$453,167	\$255,550	\$160,000	\$199,000	\$145,000	\$405,750
Middleton - 1285	\$362,380	\$395,225	\$440,000	\$298,143	\$301,733	\$307,862	\$358,075	\$324,573	\$505,000	\$223,051	\$333,007	\$400,786		\$380,500	\$294,950	\$308,000
Canyon County Other - 1290	\$243,156		\$437,475	\$189,225	\$259,100	\$226,832	\$592,860	\$427,500	\$219,800	\$297,314	\$266,250	\$287,250	\$433,750	\$221,813	\$165,975	
Parma - 1292	\$235,783	\$147,400	\$120,000	\$70,000	\$175,000	\$210,450			\$170,000				\$169,800	\$163,900	\$139,100	\$145,000
Wilder - 1293	\$184,000	\$288,000	\$350,971	\$213,000		\$330,000	\$366,200	\$290,000	\$329,950	\$353,000			\$310,000			\$320,667
Greenleaf - 1294									\$149,500						\$263,000	
Grand Total	\$375,559	\$403,188	\$406,555	\$390,763	\$400,058	\$359,256	\$415,648	\$426,520	\$349,918	\$370,213	\$364,714	\$430,690	\$376,534	\$410,390	\$283,592	\$385,580

Type

Average Monthly Sold Price

Single Family w/ Acreage

MLS Area	2008					2009											
	May	Jun	Jul	Aug	Sep	Oct	Nov	Dec	Jan	Feb	Mar	Apr	May	Jun	Jul	Aug	Sep
North Boise - 0100														\$445,000		\$220,900	
NE Boise - 0200								\$770,000					\$900,000				
SE Boise - 0300		\$420,000											\$299,900				
Boise Bench - 0400														\$168,000			
South Boise - 0500	\$218,000	\$675,000	\$265,000	\$206,000	\$155,000	\$251,500			\$140,000		\$490,000	\$407,500			\$290,000	\$222,500	
SW Boise-Meridian - 0550			\$362,000			\$232,000						\$295,000	\$307,500	\$325,250	\$386,000	\$272,000	
West Boise - 0600	\$450,000						\$227,000			\$185,000		\$199,000				\$420,000	\$157,000
W Boise-Garden City - 0650	\$370,000	\$276,667	\$143,500	\$390,500	\$165,000			\$165,000			\$190,000			\$359,900		\$174,900	
NW Boise - 0800	\$290,000			\$650,000	\$345,000	\$1,125,000	\$216,500								\$225,000	\$200,000	\$89,000
Eagle - 0900	\$661,003	\$791,650	\$808,700	\$1,088,900	\$619,729	\$545,773	\$870,000	\$580,000	\$583,408	\$464,900	\$361,950	\$410,417	\$818,600	\$552,600	\$414,056	\$930,828	\$545,879
Star - 0950	\$444,225	\$500,000	\$456,250	\$420,000	\$632,500	\$360,000		\$342,167	\$346,250	\$411,375		\$549,750	\$364,975	\$495,000	\$244,900	\$292,000	\$500,000
SE Meridian - 1000				\$230,000	\$650,000		\$529,900		\$450,000			\$430,000					\$402,000
SW Meridian - 1010			\$425,500	\$875,101	\$389,950		\$490,000			\$372,250				\$183,000	\$210,000	\$465,000	
NE Meridian - 1020		\$407,000	\$499,000			\$621,000		\$236,250			\$531,000	\$212,000	\$270,000	\$279,900	\$415,000	\$196,899	\$170,000
NW Meridian - 1030	\$335,000	\$265,000	\$810,000			\$605,000					\$140,000	\$261,026			\$297,000		\$144,000
Kuna - 1100	\$327,600	\$265,000	\$536,250		\$344,000	\$190,750	\$431,900	\$289,667	\$250,000	\$283,633		\$335,000	\$530,000	\$325,000	\$327,667	\$350,000	\$236,640
NE Nampa (87) - 1250	\$229,703		\$231,500	\$330,500	\$198,333		\$290,000	\$168,800			\$106,000	\$194,167		\$221,020	\$267,750	\$118,025	\$227,775
South Nampa (86) - 1260	\$272,500	\$308,050	\$258,550	\$195,429	\$361,070	\$229,237	\$214,980	\$250,000	\$325,000		\$284,967	\$289,522	\$304,933	\$241,309	\$310,000	\$230,633	\$244,980
NW Nampa (51) - 1270	\$253,900	\$396,500	\$242,500		\$165,000	\$112,000			\$200,000			\$310,001		\$179,900	\$307,500	\$181,750	\$160,000
Melba - 1265			\$395,000	\$101,150	\$164,000	\$227,500			\$178,500			\$235,000	\$265,000	\$299,500	\$275,000	\$200,000	\$386,777
NW Caldwell - 1275	\$229,500	\$219,900			\$285,880			\$217,500						\$167,500	\$127,000		\$144,750
SW Caldwell - 1280	\$156,200	\$232,000	\$258,475	\$225,950			\$165,000	\$226,133	\$190,050	\$153,000	\$210,000	\$320,000	\$298,214	\$155,000	\$139,000	\$223,325	\$231,350
Middleton - 1285	\$369,725	\$394,375		\$345,000	\$282,233	\$196,267	\$255,000	\$291,000	\$366,960	\$265,680	\$236,667	\$265,900	\$216,333	\$294,556	\$286,915	\$263,800	\$208,000
Canyon County Other - 1290	\$207,050	\$158,950	\$229,000	\$181,383	\$235,125						\$272,967	\$140,000	\$160,000	\$258,956	\$450,000	\$183,077	\$206,600
Parma - 1292	\$110,000		\$223,500		\$199,333	\$83,500						\$180,500	\$190,000		\$150,000	\$85,000	\$99,900
Wilder - 1293					\$195,000	\$265,900	\$135,000	\$228,000		\$240,000		\$222,500	\$260,000	\$151,000	\$267,500	\$168,000	\$175,000
Greenleaf - 1294			\$155,500														\$250,000
Grand Total	\$375,226	\$432,440	\$372,055	\$387,032	\$338,027	\$379,830	\$306,680	\$311,866	\$342,872	\$315,161	\$275,539	\$310,339	\$390,344	\$327,325	\$295,683	\$274,356	\$291,643

Type

Average Monthly Sold Price

Single Family w/ Acreage

MLS Area	2009			2010						
	Oct	Nov	Dec	Jan	Feb	Mar	Apr	May	Jun	Jul
North Boise - 0100								\$565,000		\$465,000
NE Boise - 0200				\$715,000						\$939,900
SE Boise - 0300									\$325,000	
Boise Bench - 0400	\$59,900					\$350,000				
South Boise - 0500		\$360,000				\$164,450		\$134,200	\$195,451	\$216,250
SW Boise-Meridian - 0550	\$229,667	\$307,333	\$110,000		\$199,300	\$162,667	\$219,001	\$235,450	\$130,000	\$370,000
West Boise - 0600	\$234,900									
W Boise-Garden City - 0650		\$133,900		\$354,000	\$450,129					
NW Boise - 0800			\$452,500	\$379,900	\$355,000			\$468,000	\$217,500	
Eagle - 0900	\$663,800	\$378,000	\$533,617	\$536,000	\$562,200	\$403,560	\$463,870	\$369,417	\$465,857	\$554,843
Star - 0950	\$272,000	\$250,000	\$462,500	\$245,900	\$332,000	\$325,000	\$211,000	\$299,000	\$247,506	\$308,750
SE Meridian - 1000	\$309,013					\$175,000	\$145,000	\$250,000		
SW Meridian - 1010	\$275,000	\$210,000	\$345,000	\$185,000	\$236,950	\$225,000	\$387,900	\$200,000		\$385,000
NE Meridian - 1020	\$425,000	\$166,500				\$171,250			\$285,000	\$288,000
NW Meridian - 1030	\$188,633	\$210,000			\$260,250	\$225,625		\$294,500	\$92,400	
Kuna - 1100	\$248,000	\$142,500	\$199,200	\$283,500	\$219,975	\$248,500	\$135,000	\$85,900	\$309,540	\$264,000
NE Nampa (87) - 1250	\$242,300	\$146,125	\$229,333	\$157,950	\$186,063	\$149,118	\$229,950	\$243,857	\$230,250	\$89,000
South Nampa (86) - 1260	\$259,455	\$211,333	\$229,217	\$386,000	\$198,714	\$214,833	\$207,257	\$203,783	\$243,813	\$271,522
NW Nampa (51) - 1270		\$271,000					\$120,000	\$195,000		\$237,500
Melba - 1265			\$175,000		\$250,000	\$157,750	\$194,667	\$383,833	\$178,078	
NW Caldwell - 1275		\$192,450		\$206,000			\$154,100		\$223,750	\$265,100
SW Caldwell - 1280	\$273,400	\$226,967	\$344,000	\$135,000	\$198,000	\$58,000	\$229,033	\$241,333	\$209,725	\$235,500
Middleton - 1285	\$300,090	\$181,935	\$247,525	\$215,671	\$282,817	\$200,780	\$186,867	\$195,045	\$191,500	\$221,225
Canyon County Other - 1290	\$96,100	\$166,125	\$183,100		\$285,000	\$190,908	\$201,667	\$186,275	\$195,343	\$194,575
Parma - 1292	\$144,900	\$152,300	\$182,500			\$171,800	\$145,250		\$140,000	\$126,667
Wilder - 1293	\$179,900	\$134,000	\$240,000		\$135,000		\$182,500	\$164,900	\$200,000	\$324,250
Greenleaf - 1294					\$160,000	\$244,000	\$217,500			
Grand Total	\$295,552	\$222,206	\$293,815	\$333,748	\$295,306	\$236,729	\$258,922	\$250,525	\$253,432	\$294,468