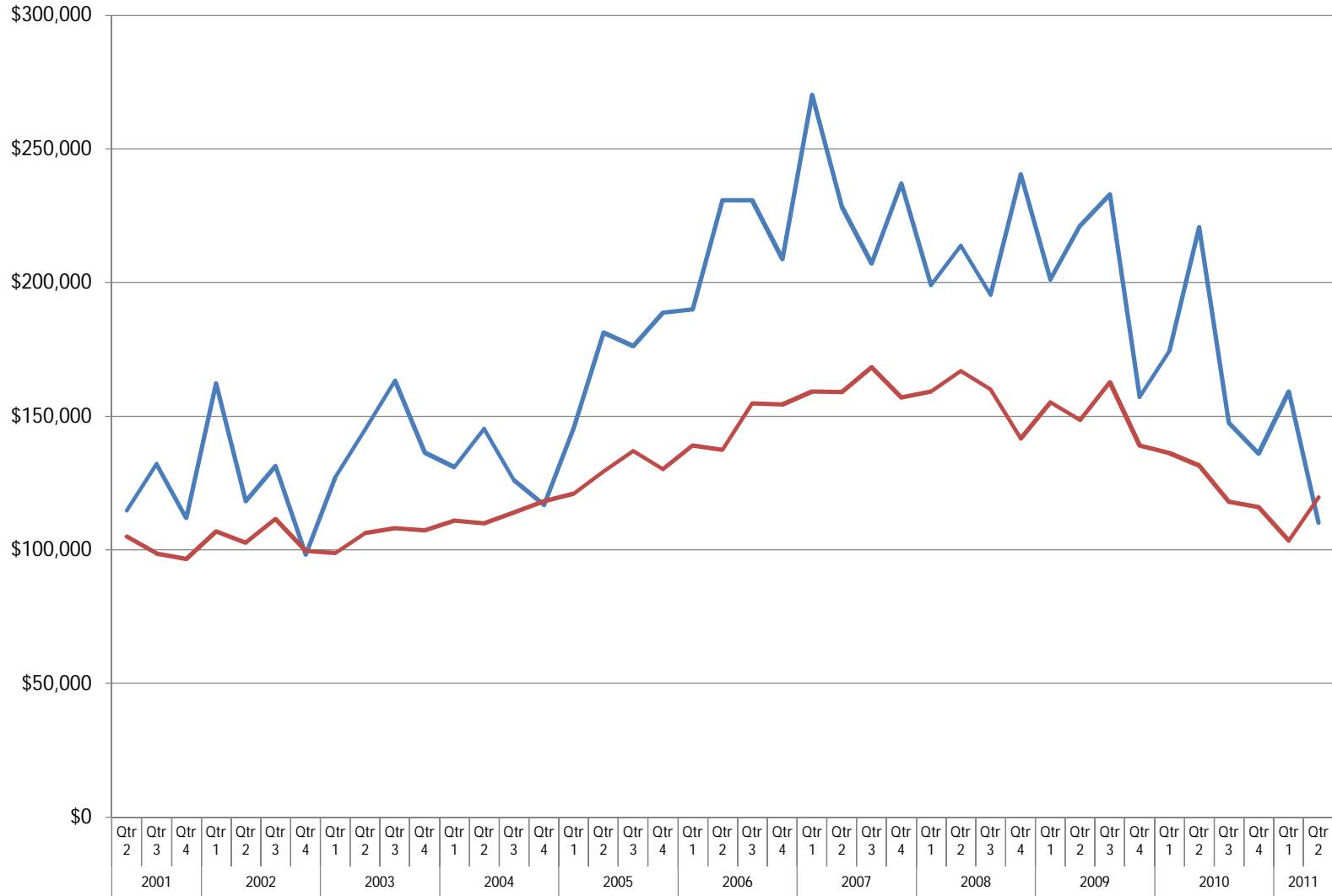


### Average Quarterly Sold Price of Homes in IMLS Elmore County



Single Family w/ Acreage	\$114	\$132	\$112	\$162	\$118	\$131	\$98	\$127	\$145	\$163	\$136	\$130	\$145	\$126	\$116	\$145	\$181	\$176	\$188	\$189	\$230	\$230	\$208	\$270	\$228	\$207	\$237	\$199	\$213	\$195	\$240	\$201	\$221	\$233	\$157	\$174	\$220	\$147	\$136	\$159	\$110
Single Family	\$104	\$98	\$96	\$106	\$102	\$111	\$99	\$98	\$106	\$108	\$107	\$110	\$109	\$114	\$118	\$121	\$129	\$137	\$130	\$138	\$137	\$154	\$154	\$159	\$159	\$168	\$157	\$159	\$166	\$160	\$141	\$155	\$148	\$162	\$138	\$136	\$131	\$117	\$116	\$103	\$119