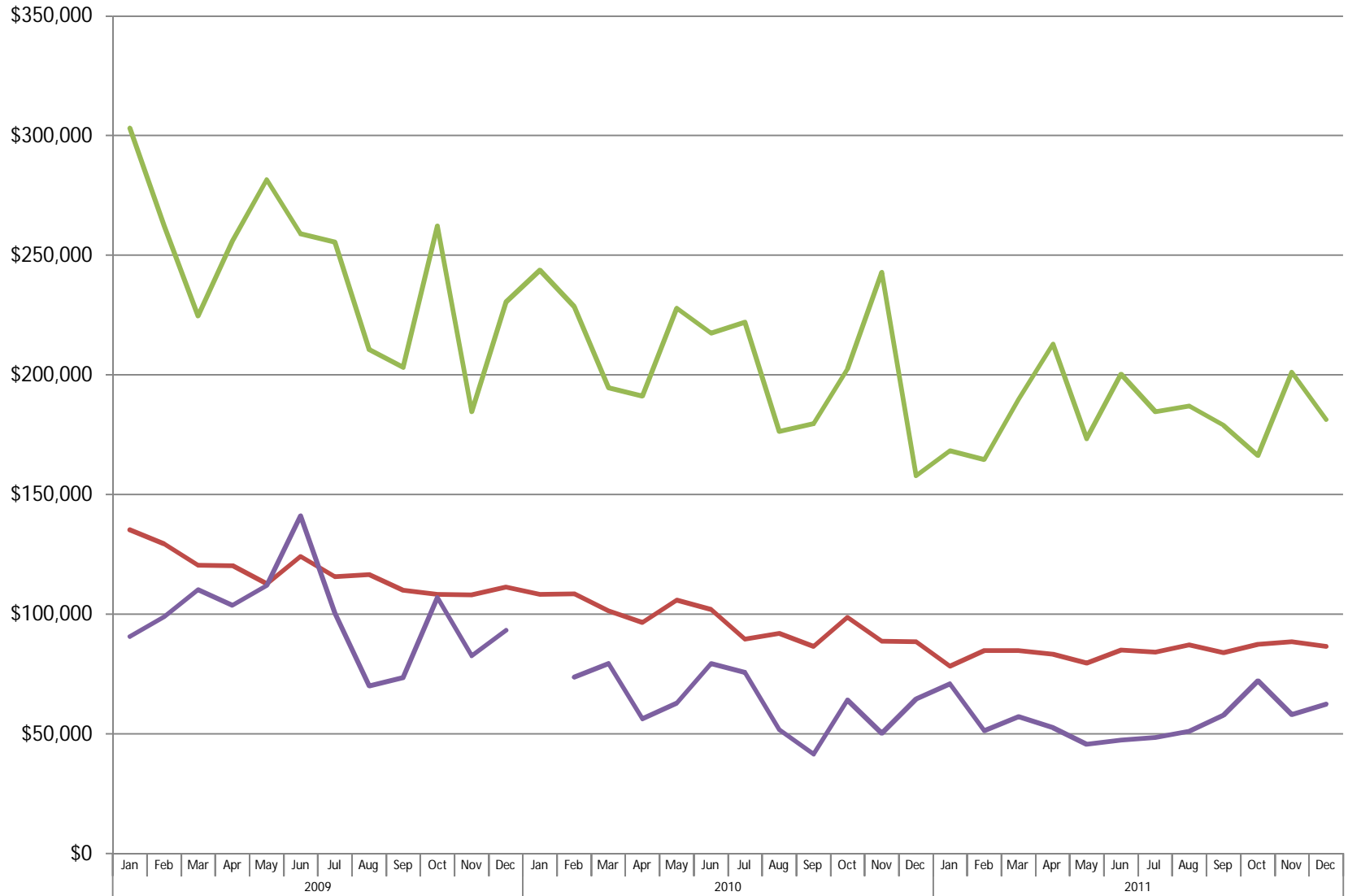


Average Monthly Sold Price - Canyon County



	Jan	Feb	Mar	Apr	May	Jun	Jul	Aug	Sep	Oct	Nov	Dec	Jan	Feb	Mar	Apr	May	Jun	Jul	Aug	Sep	Oct	Nov	Dec	Jan	Feb	Mar	Apr	May	Jun	Jul	Aug	Sep	Oct	Nov	Dec	
	2009												2010												2011												
Condo																									\$20,0												
Single Family	\$135,	\$129,	\$120,	\$120,	\$112,	\$124,	\$115,	\$116,	\$110,	\$108,	\$108,	\$111,	\$108,	\$108,	\$101,	\$96,4	\$105,	\$101,	\$89,6	\$92,0	\$86,4	\$98,6	\$88,6	\$88,4	\$78,2	\$84,7	\$84,7	\$83,1	\$79,6	\$84,9	\$84,0	\$87,1	\$83,9	\$87,4	\$88,3	\$86,5	
Single Family w/ Acreage	\$303,	\$262,	\$224,	\$255,	\$281,	\$258,	\$255,	\$210,	\$203,	\$262,	\$184,	\$230,	\$243,	\$228,	\$194,	\$191,	\$227,	\$217,	\$221,	\$176,	\$179,	\$202,	\$242,	\$157,	\$168,	\$164,	\$189,	\$212,	\$173,	\$200,	\$184,	\$186,	\$179,	\$166,	\$201,	\$181,	
Townhouse	\$90,6	\$99,0	\$110,	\$103,	\$112,	\$141,	\$100,	\$70,0	\$73,4	\$106,	\$82,6	\$93,3		\$73,5	\$79,2	\$56,2	\$62,7	\$79,2	\$75,6	\$51,6	\$41,6	\$64,1	\$50,2	\$64,6	\$70,8	\$51,3	\$57,1	\$52,5	\$45,6	\$47,4	\$48,5	\$51,0	\$57,7	\$72,0	\$58,0	\$62,3	